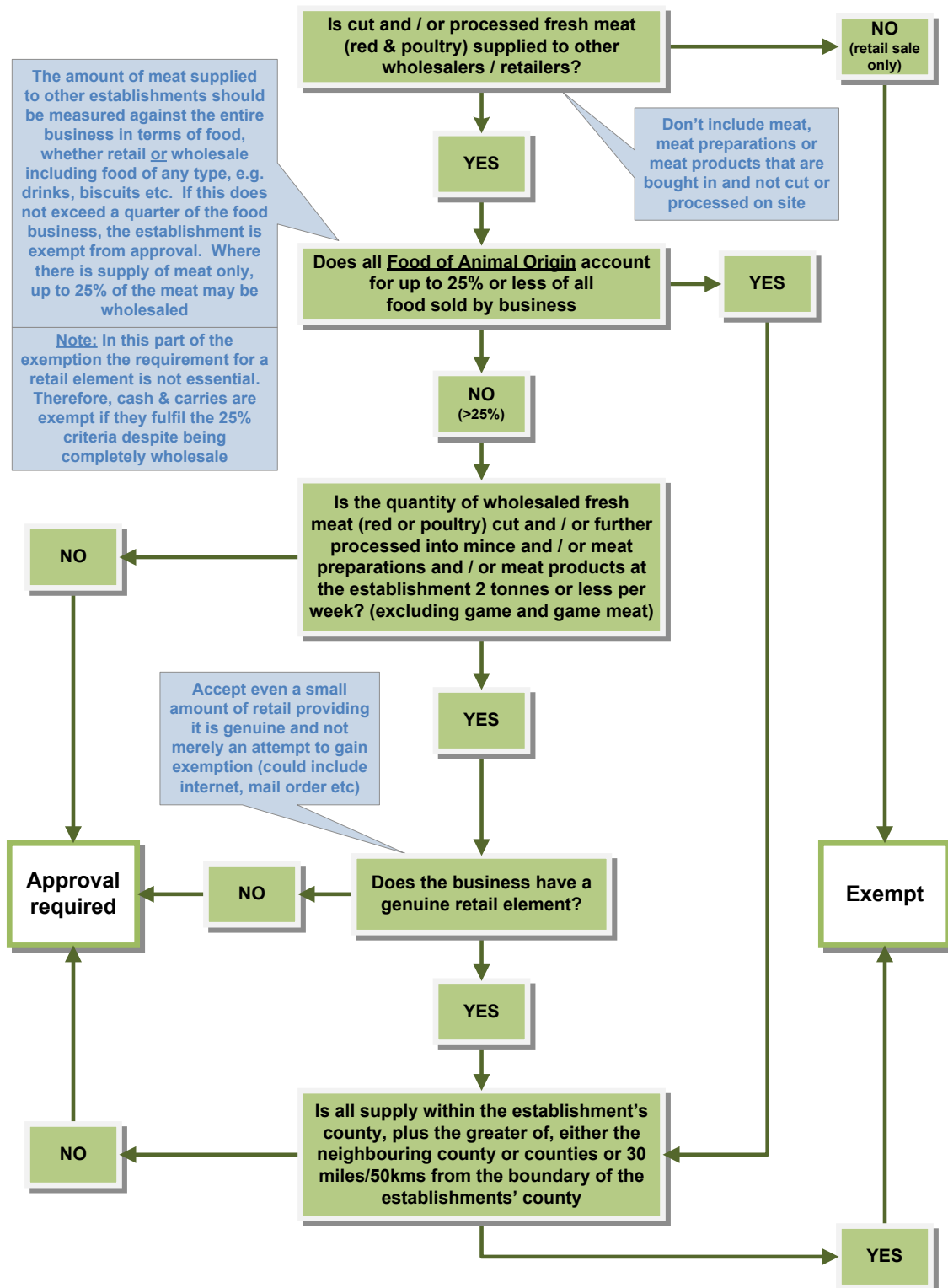


Exemption Criteria – Flow Diagram



Exemption Criteria (accessible version):

1. Is cut and/or processed fresh meat (red and poultry) supplied to other wholesalers/retailers?

No: Retail sale only – **Exempt**.

(Note: Don't include meat, meat preparation or meat products that are bought in or not cut and processed on site.)

2. Yes: Does all Food of Animal Origin account for up to 25% or less of all food sold by businesses?

(Note: The amount of meat supplied to other establishments should be measured against the entire business in terms of food, whether retail or wholesale including food of any type for example, drinks, biscuits etc. If this does not exceed a quarter of the food business, the establishment is exempt from approval. Where there is supply of meat only, up to 25% of the meat may be wholesaled.)

(Note: In this part of the exemption the requirement for a retail element is not essential. Therefore, cash and carries are exempt if they fulfil the 25% criteria despite being completely wholesale.)

Yes: **Skip to step 5.**

3. No: More than 25% - Is the quantity of wholesaled fresh meat (red or poultry) cut and/or further processed into mince and/or meat preparations and/or meat products at the establishment 2 tonnes or less per week? (excluding game or game meat)

No: **Approval required**

4. Yes: Does the business have a genuine retail element?

No: **Approval required**

(Note: Accept even a small amount of retail, providing it is genuine and not merely an attempt to gain exemption (could include internet, mail order, etc.)

5. Yes: Is all supply within the establishment's country, plus the greater of, either the neighbouring county or counties or 30 miles/50kms from the boundary of the establishments' county
6. Yes: **Exempt**