

Appendix i Compilation of LA-ICP-MS data:
(b) Additional images of cereal grains

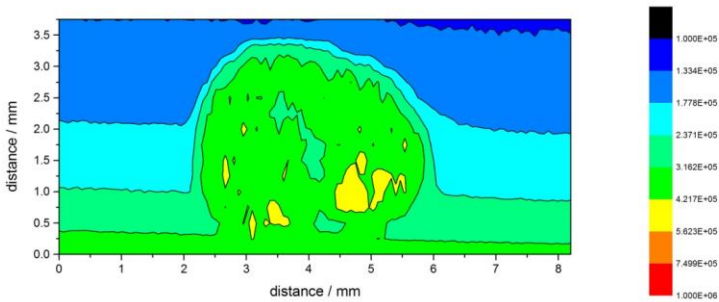
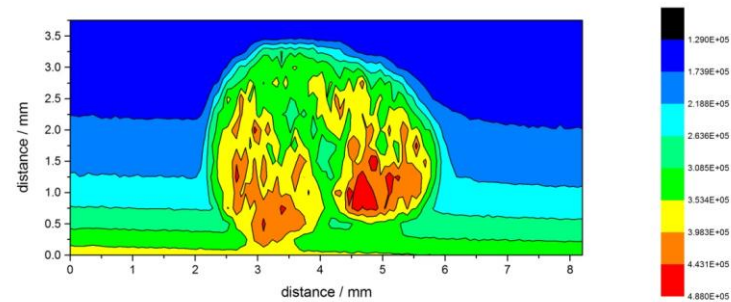
Laser ablation inductively coupled plasma mass spectrometry analysis of sectioned cereal grains showing element distribution in 2D. X and Y axes is plotted in mm where the scan speed was $50 \mu\text{m s}^{-1}$. An integration time of 0.1 s per mass was used and measurements were recorded every 1.442 s. Z axis uses a false colour scale for contours of intensity. Samples are listed in order of the analysis sequence and are uncorrected for any drift.

Contents.

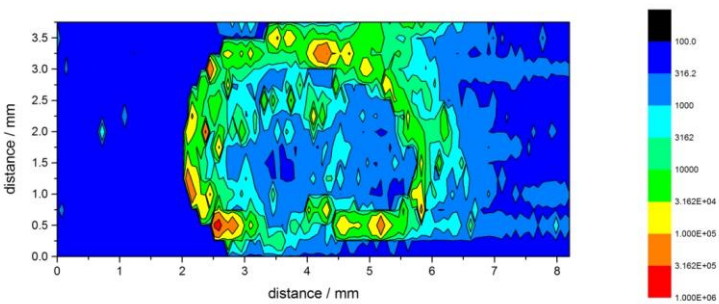
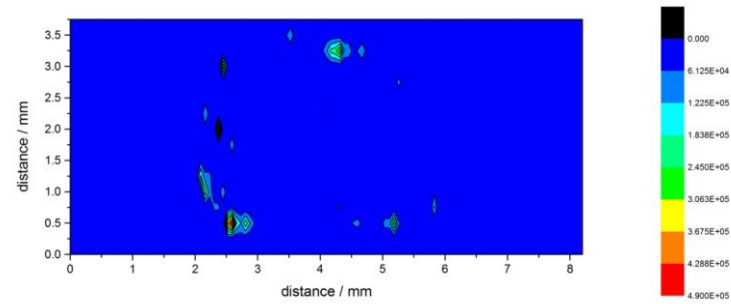
Page 2	Kent Wheat
Page 9	Nottinghamshire Wheat
Page 16	Leicestershire Wheat
Page 23	Yorkshire Wheat
Page 30	Perth and Kinross Wheat
Page 37	Yorkshire Barley
Page 44	Northern Ireland Wheat
Page 51	Nottinghamshire Wheat (2)

Kent Wheat

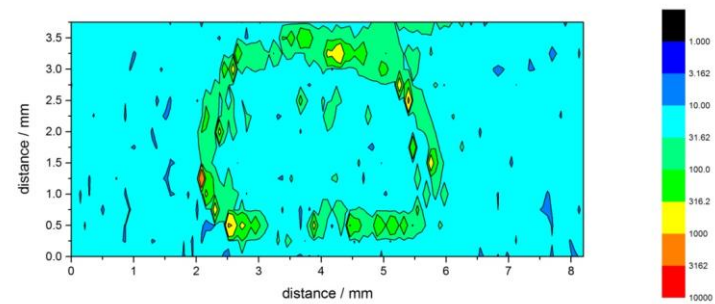
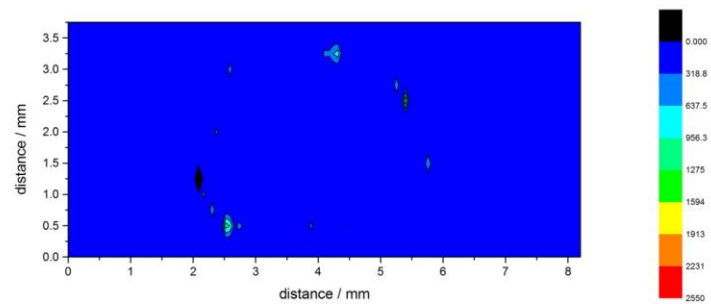
C (*shows declining carbon gas background)



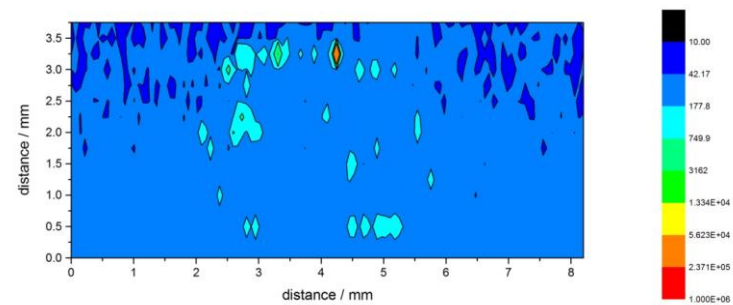
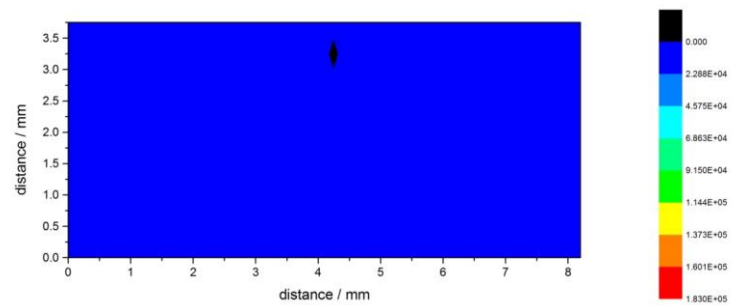
AI



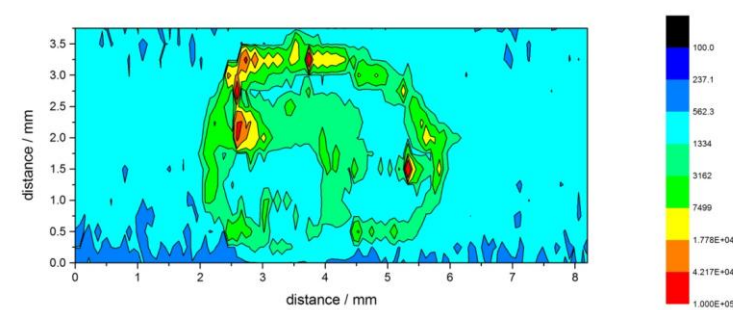
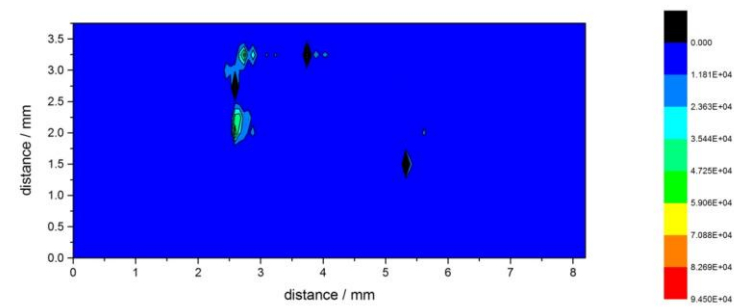
V



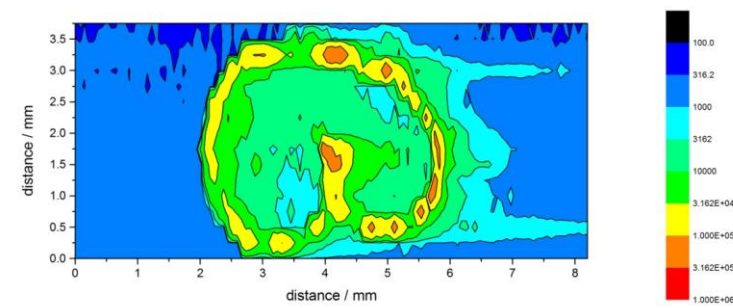
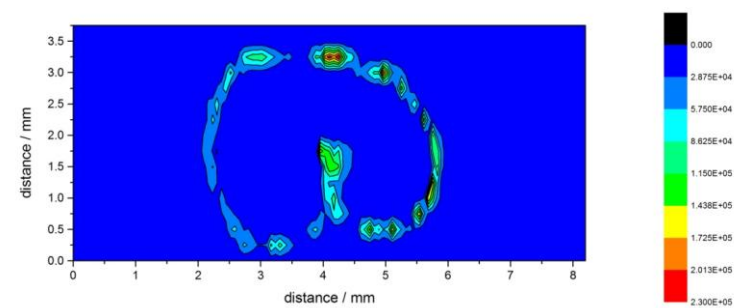
Cr



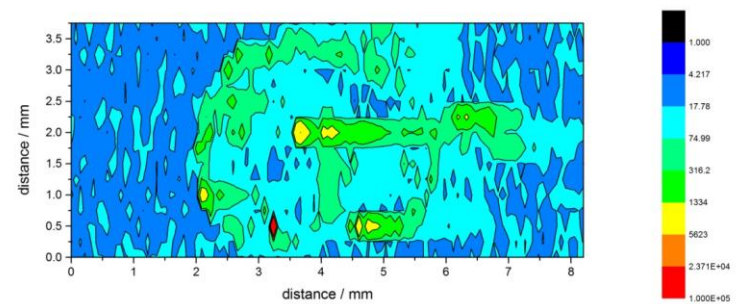
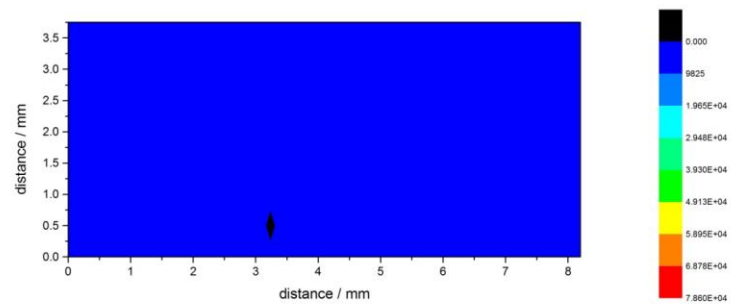
Fe



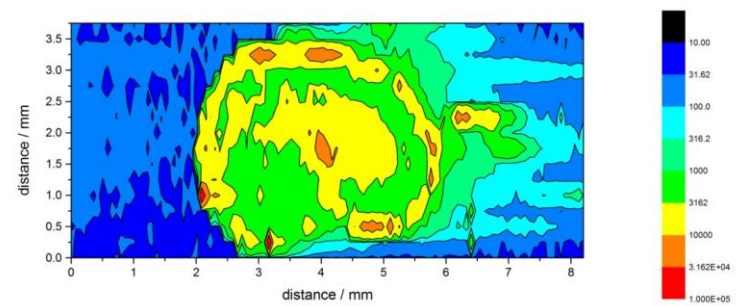
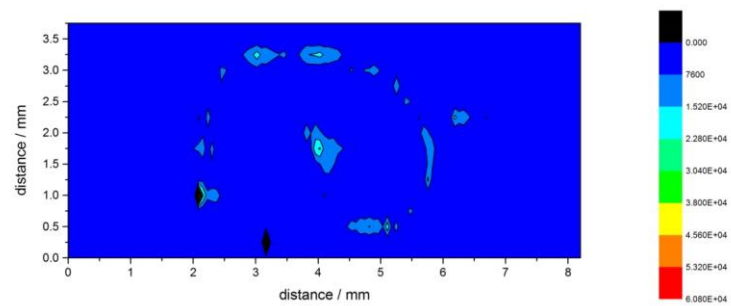
Mn



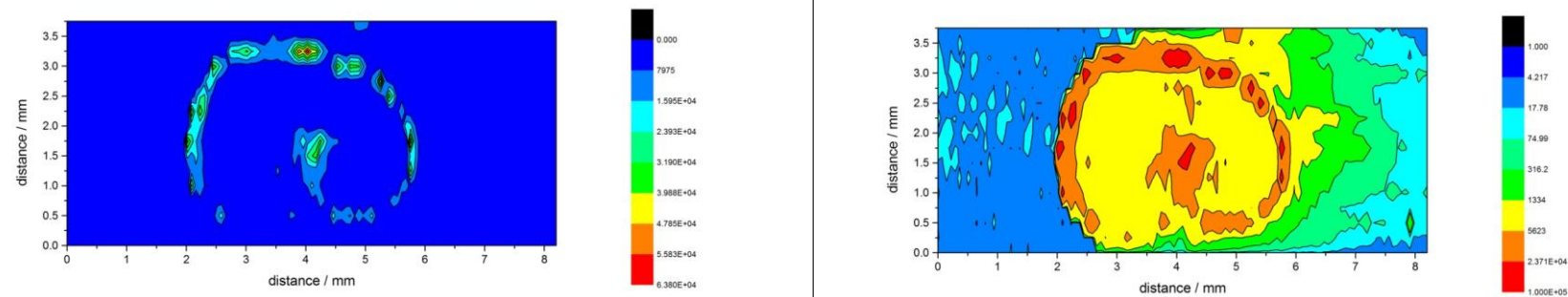
Ni



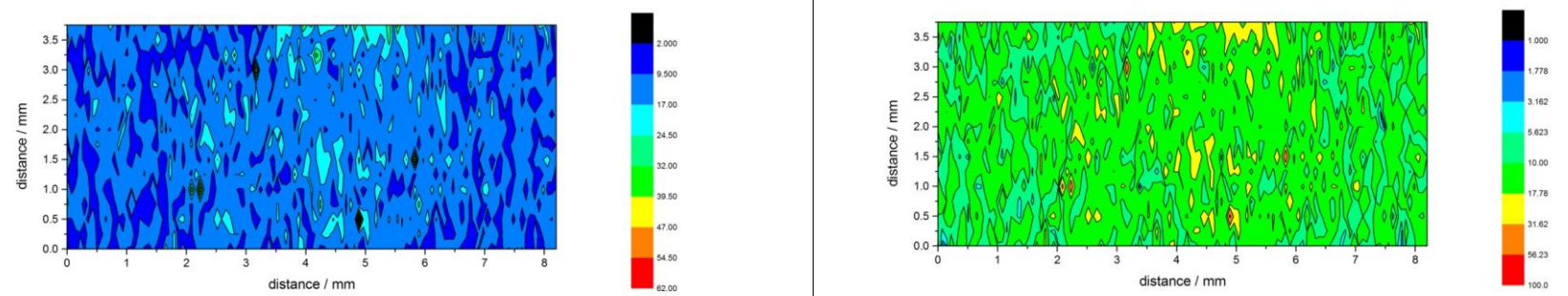
Cu



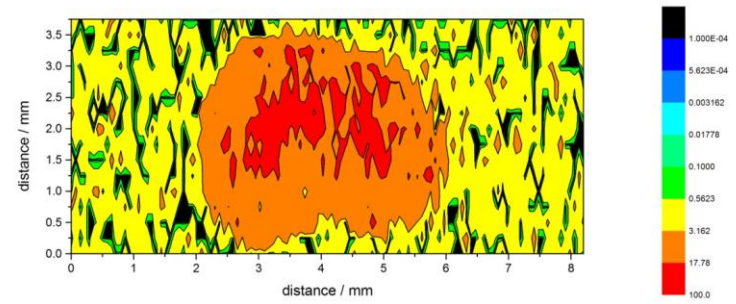
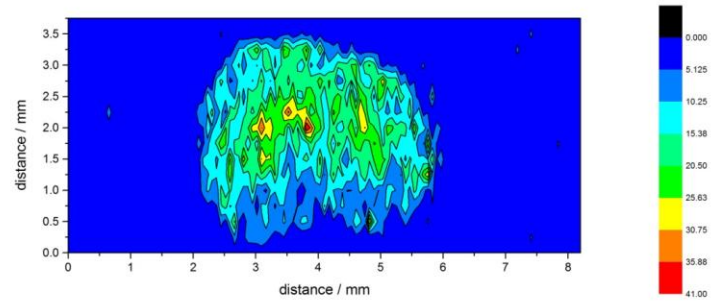
Zn



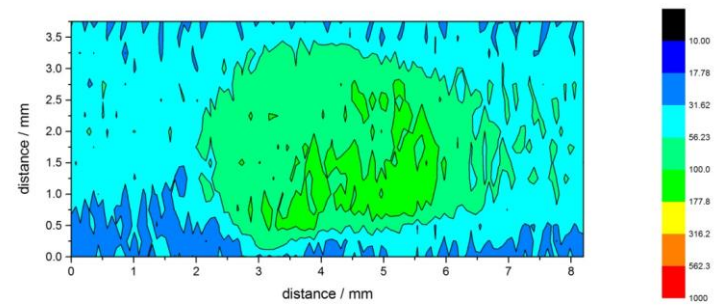
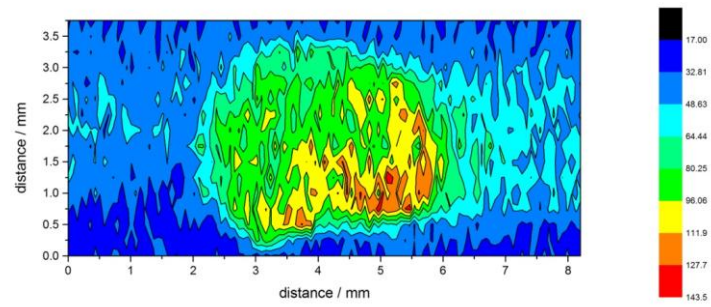
As



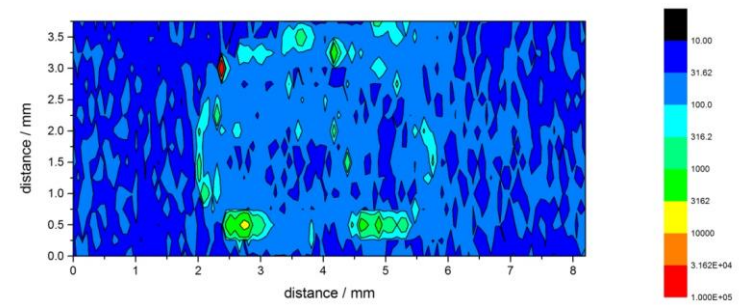
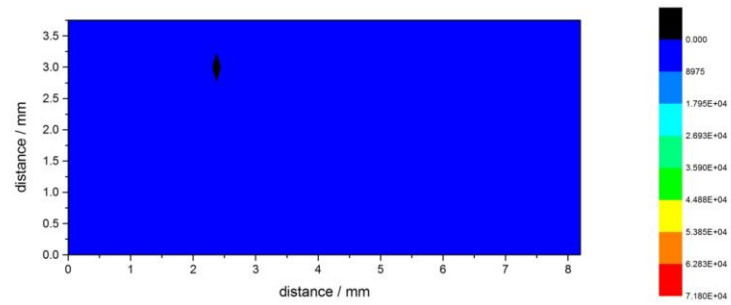
Cd



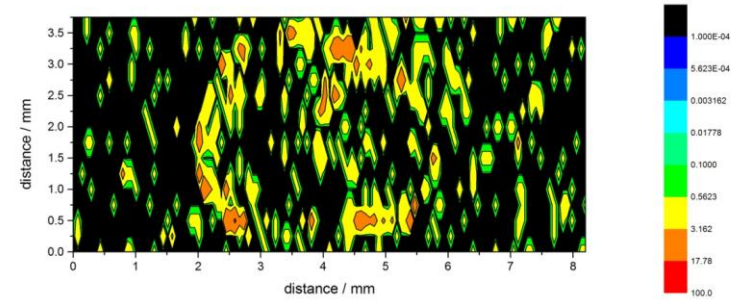
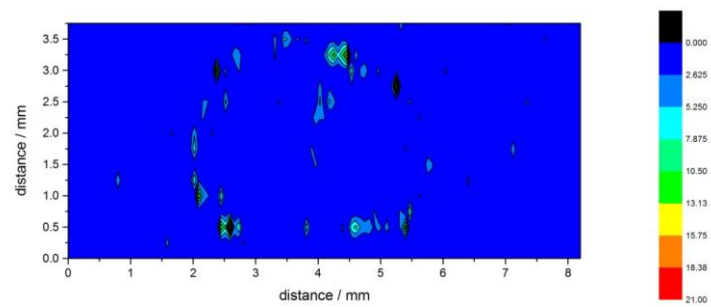
Hg



Pb

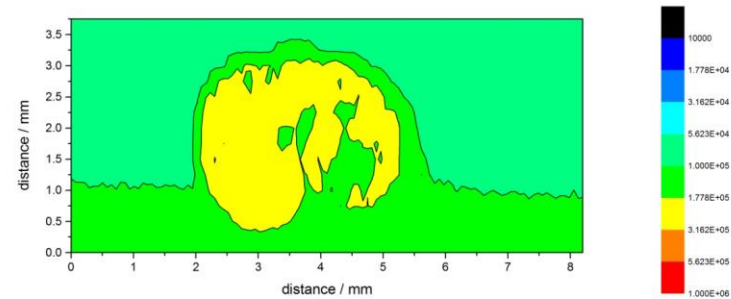
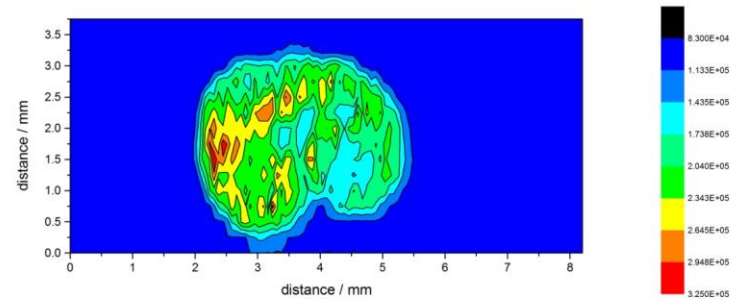


U

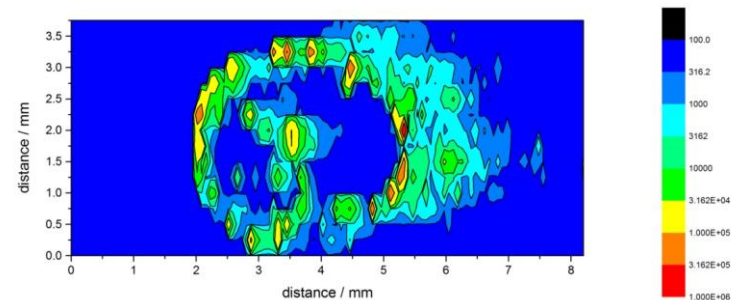
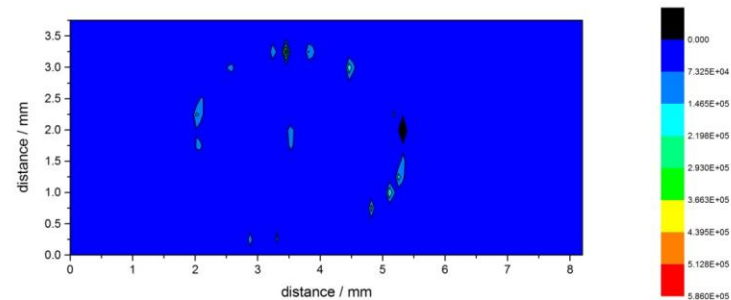


Nottinghamshire Wheat (East Stoke)

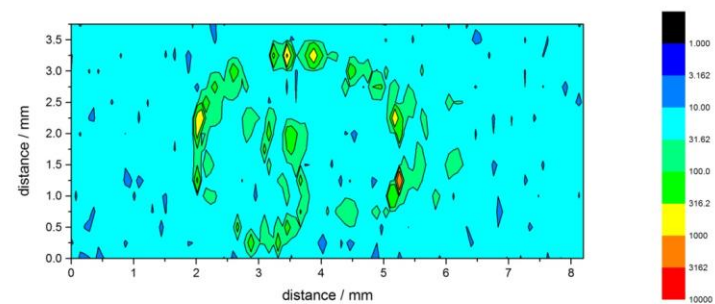
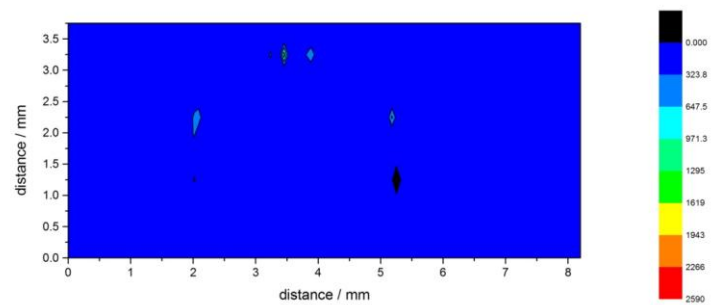
C



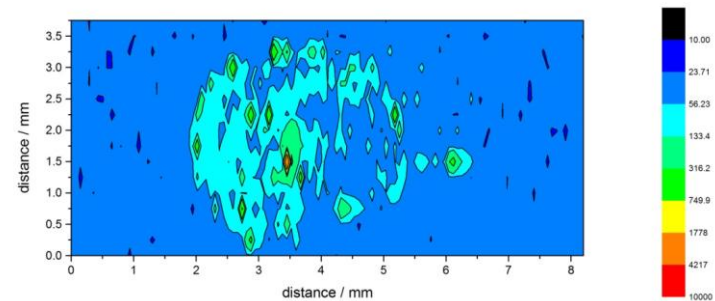
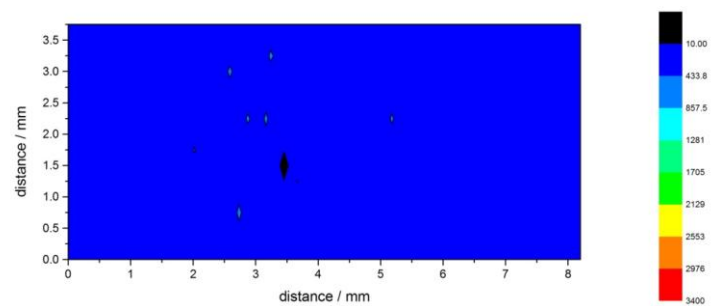
AI



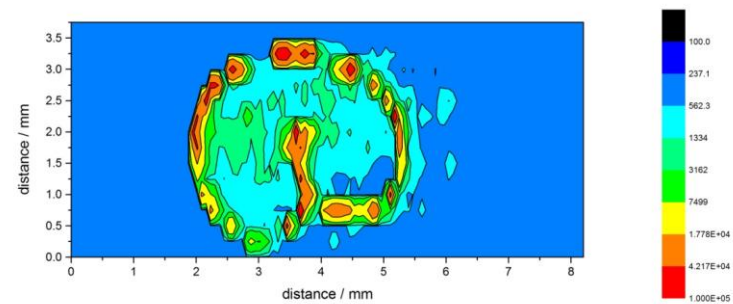
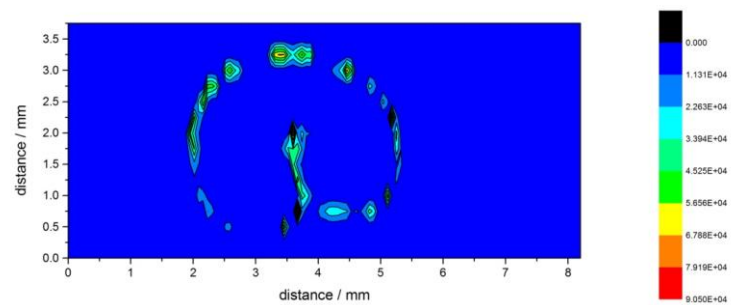
V



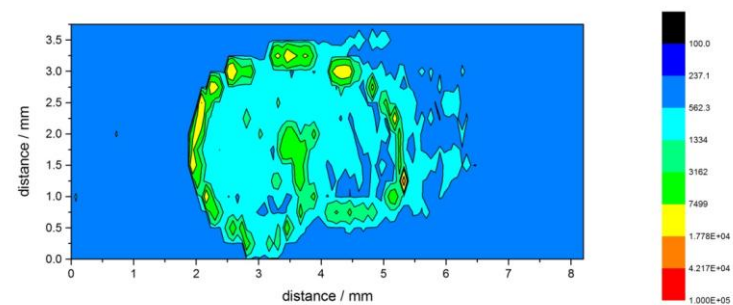
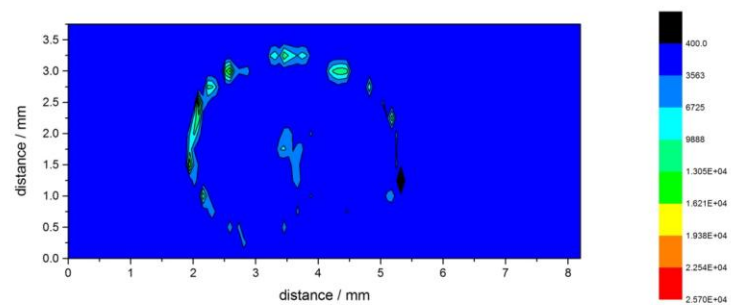
Cr



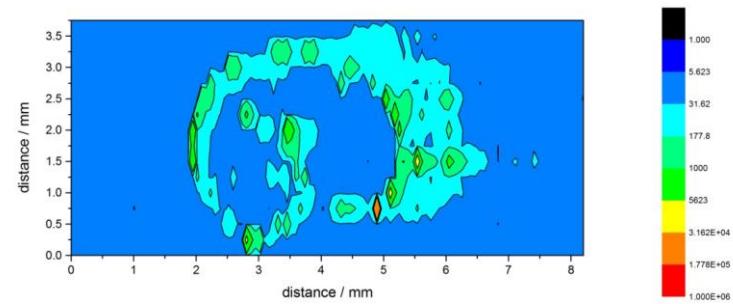
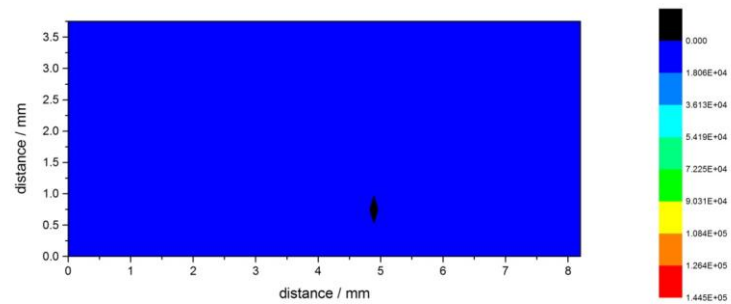
Mn



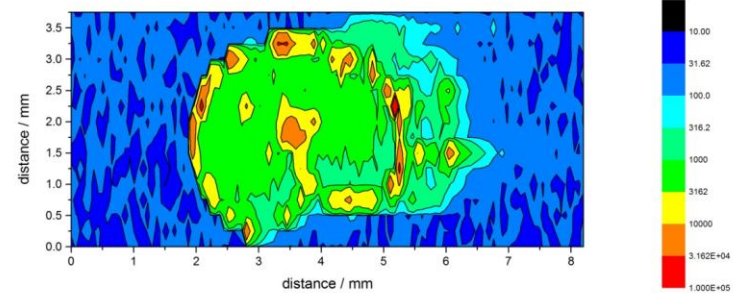
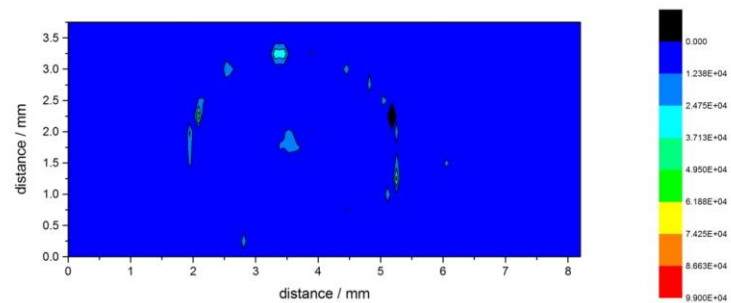
Fe



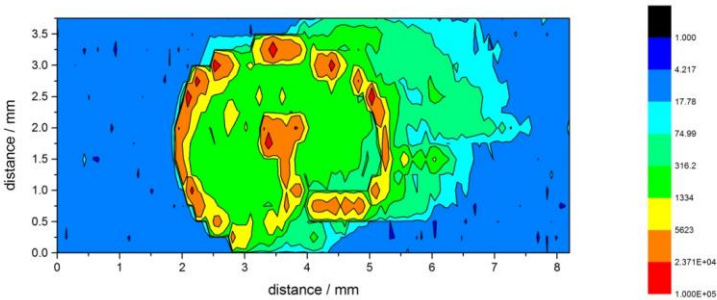
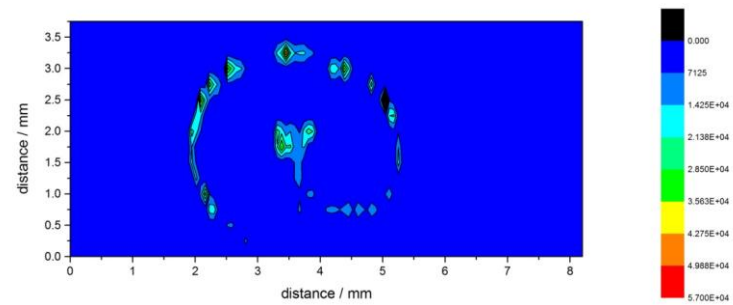
Ni



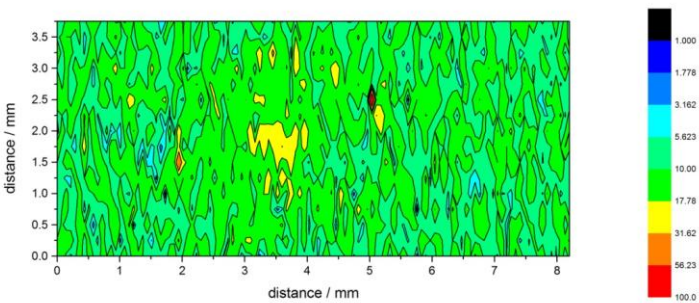
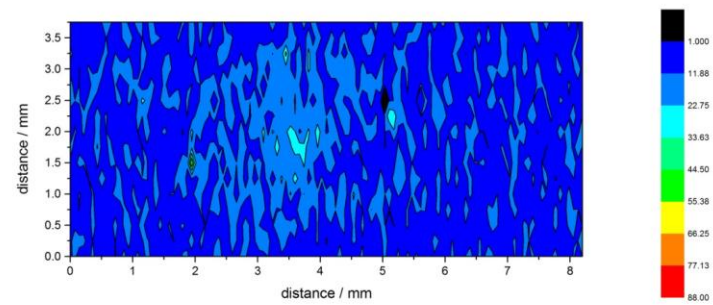
Cu



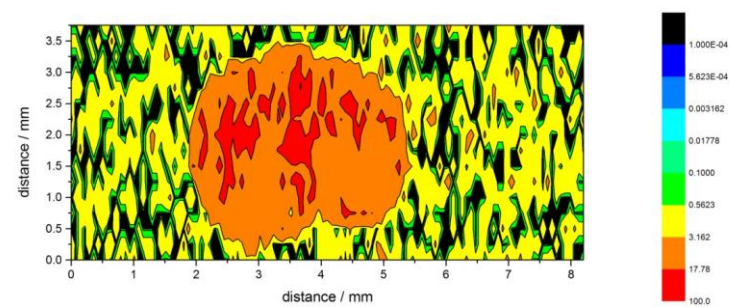
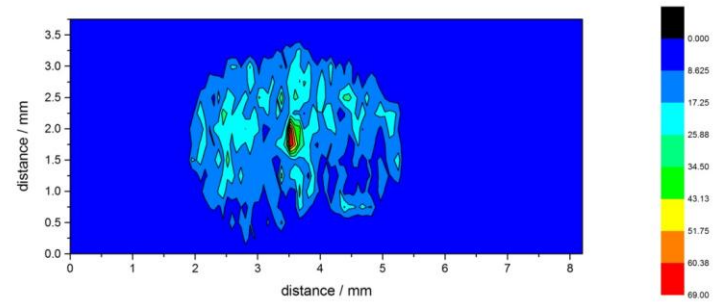
Zn



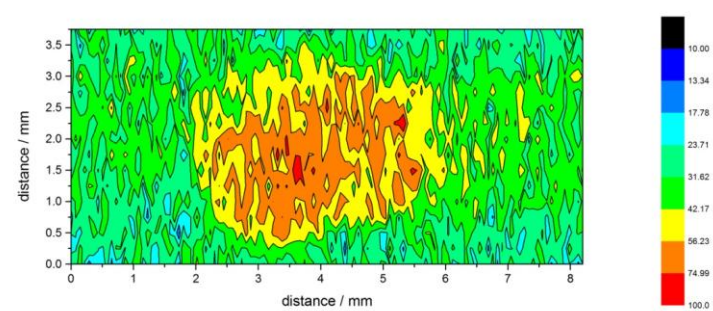
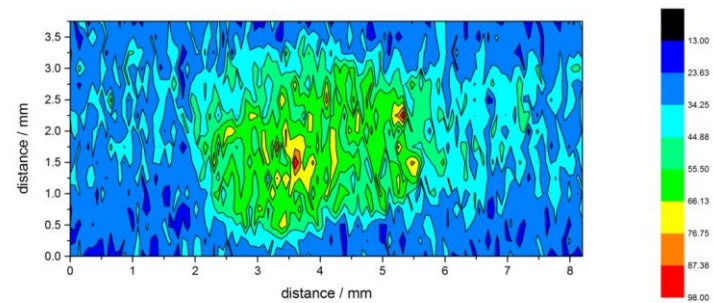
As



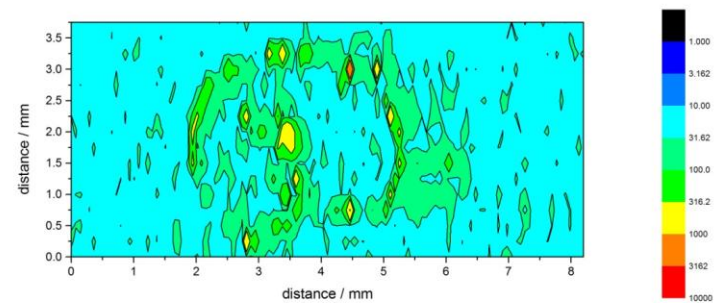
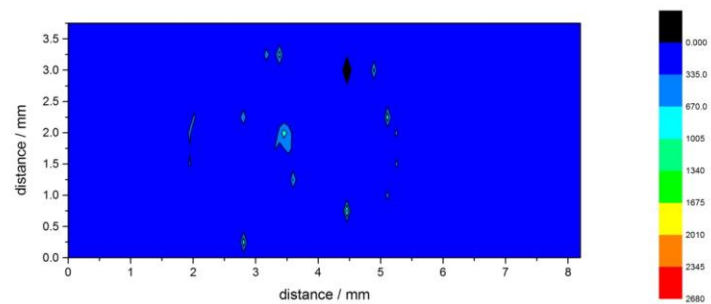
Cd



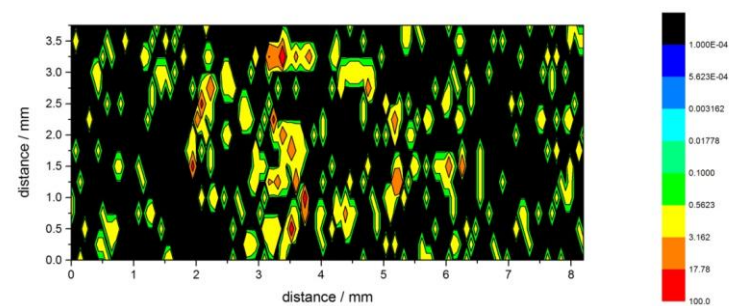
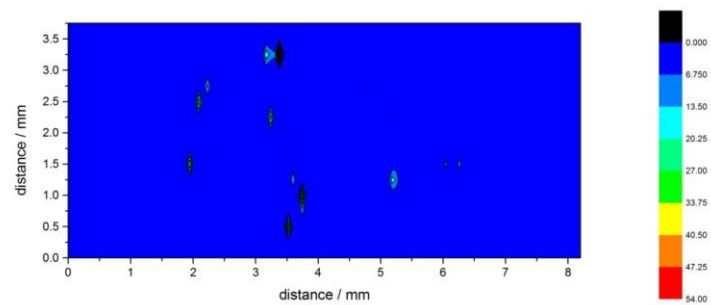
Hg



Pb

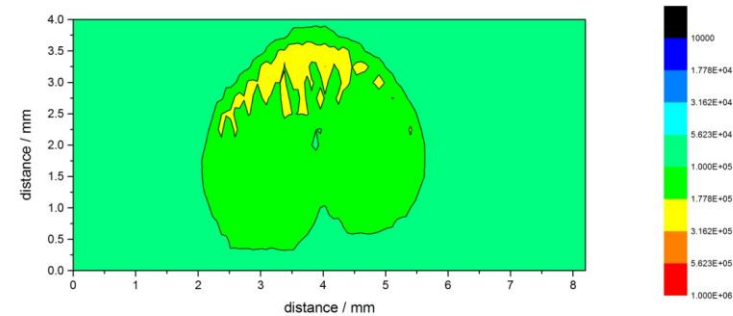
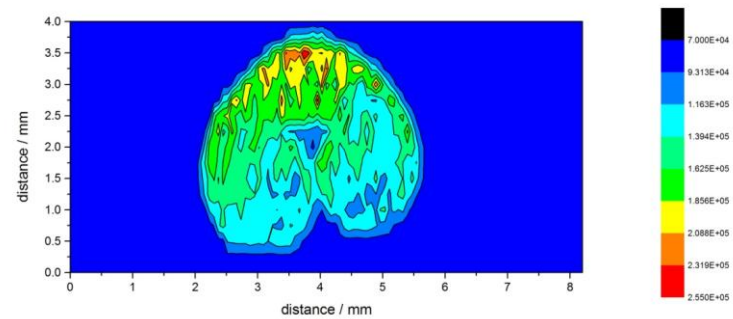


U

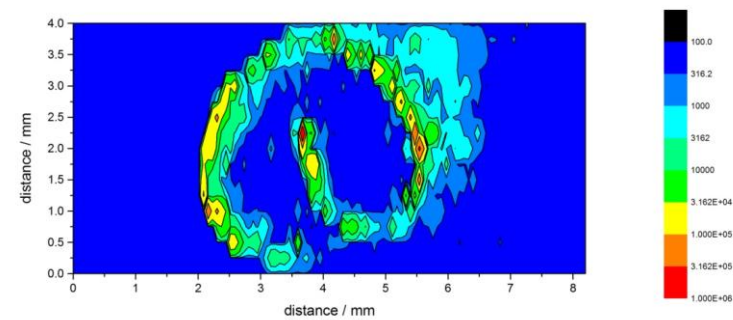
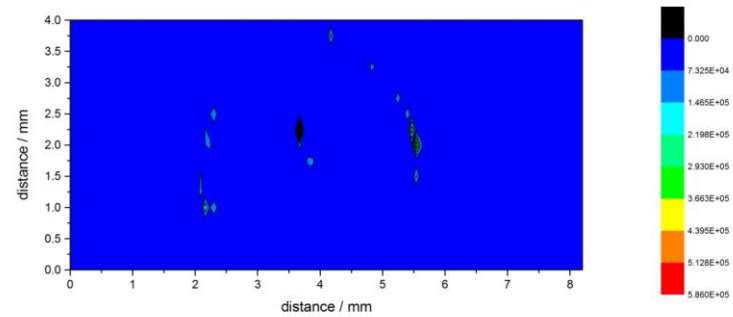


Leicestershire Wheat

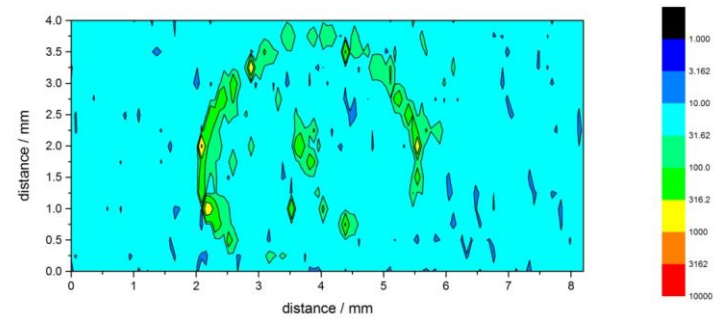
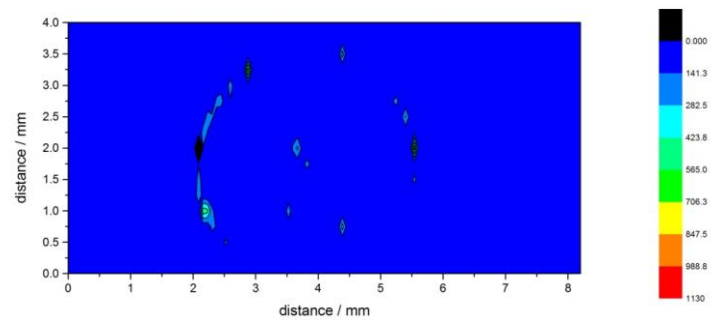
C



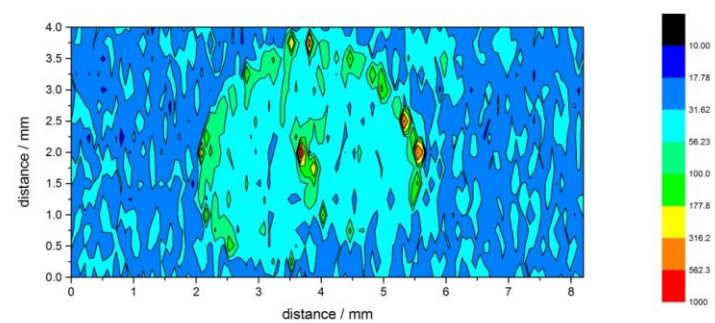
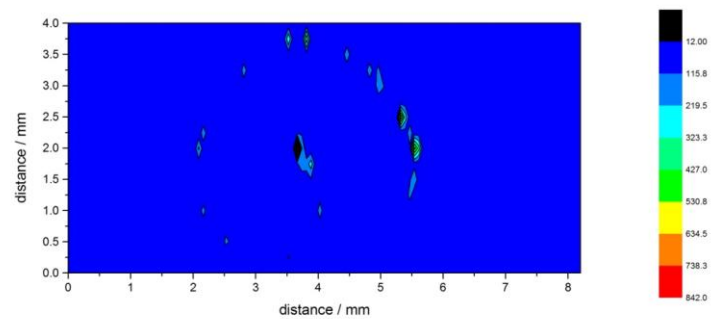
AI



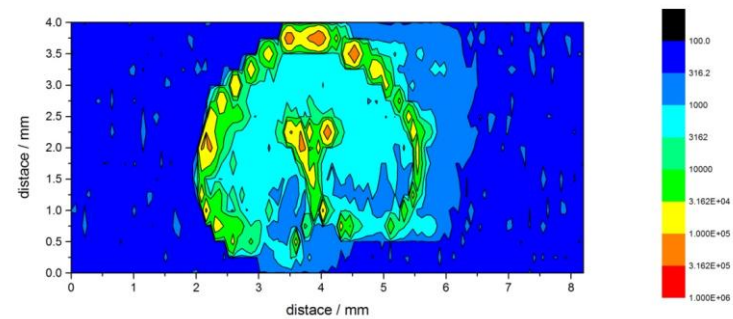
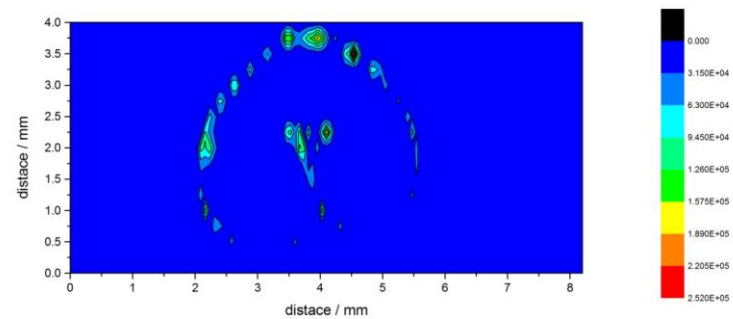
V



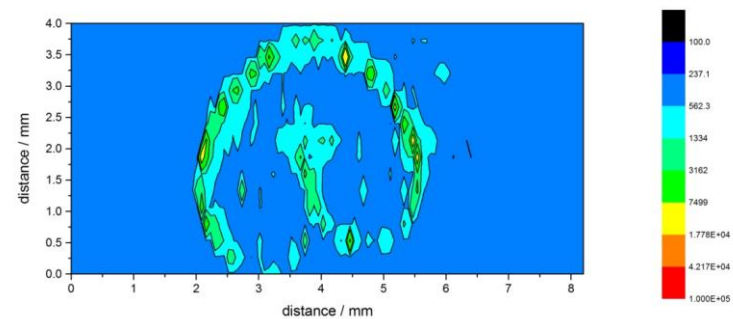
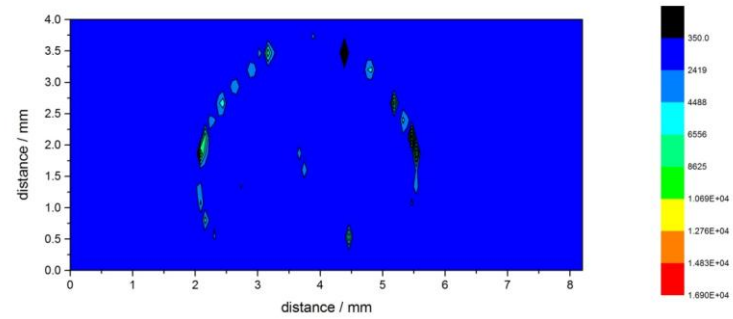
Cr



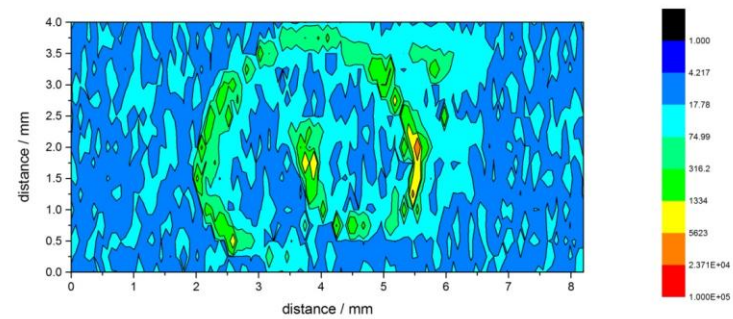
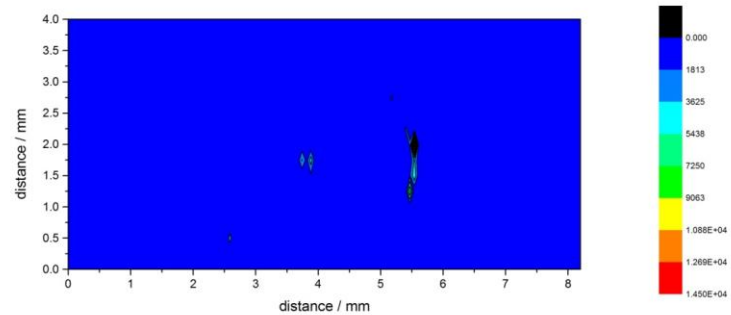
Mn



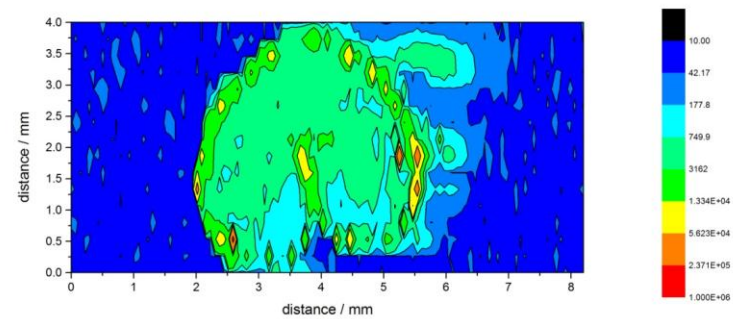
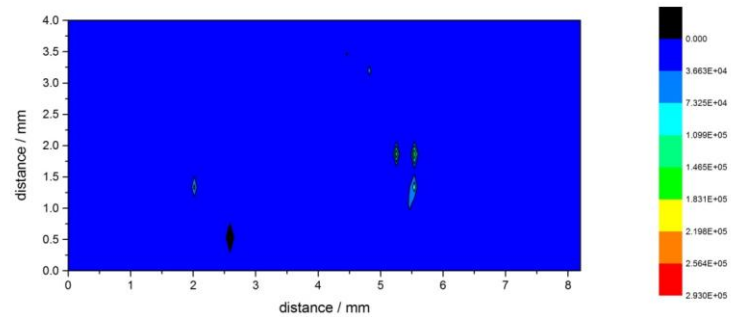
Fe



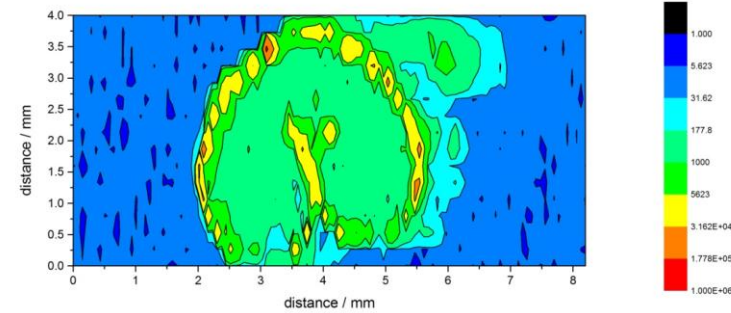
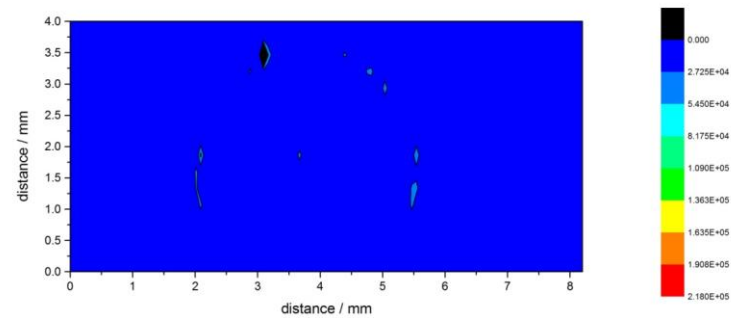
Ni



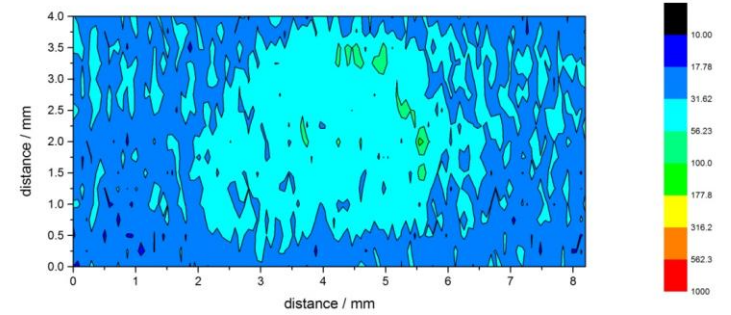
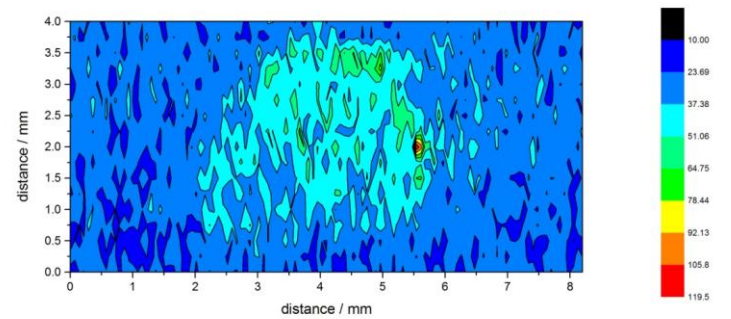
Cu



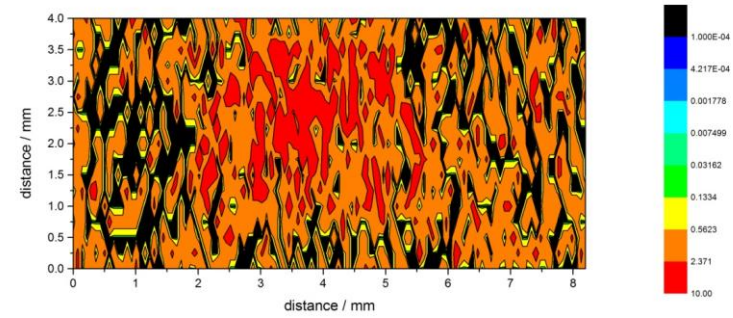
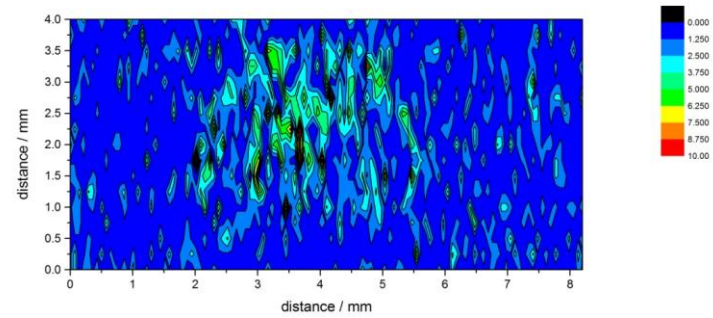
Zn



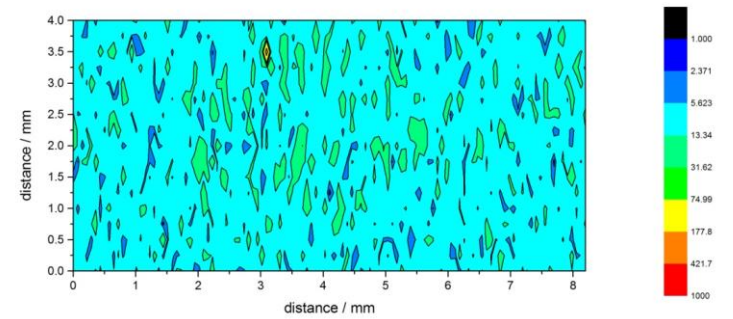
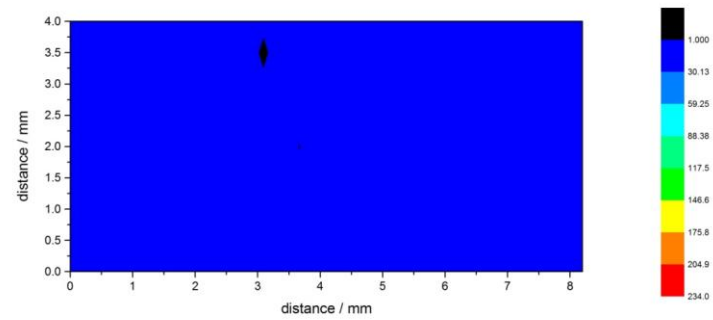
As



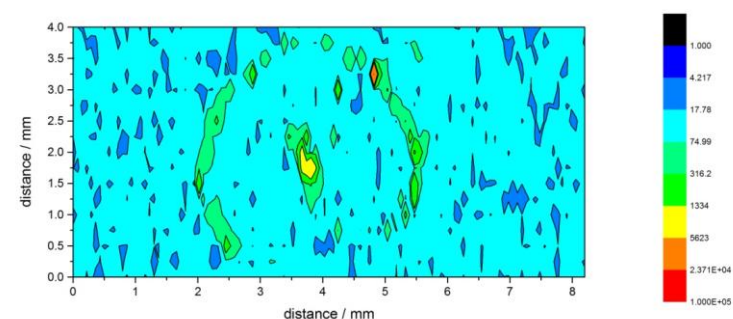
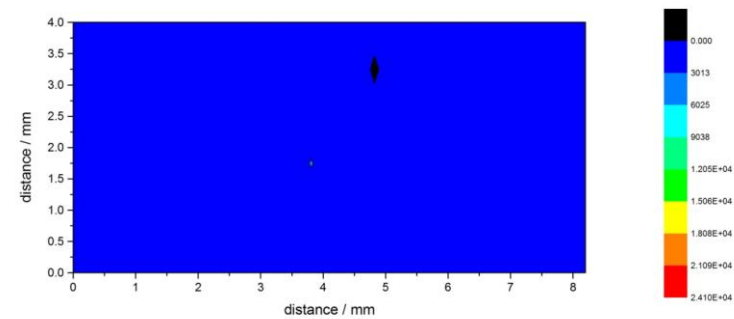
Cd



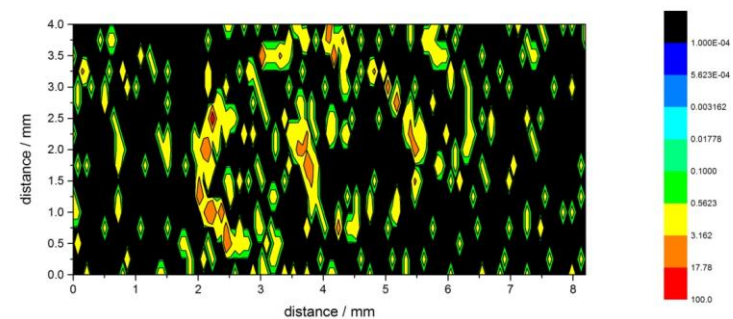
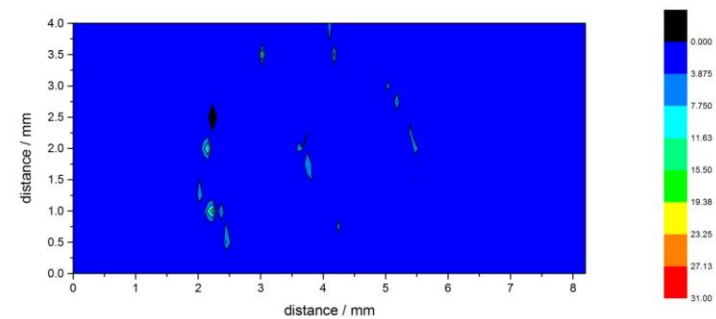
Hg



Pb

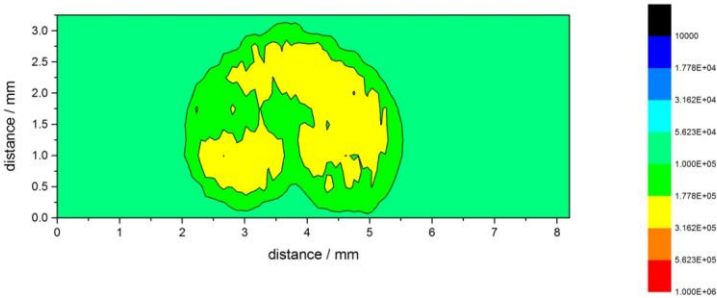
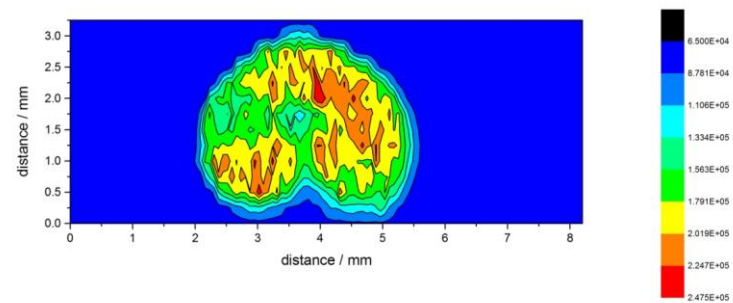


U

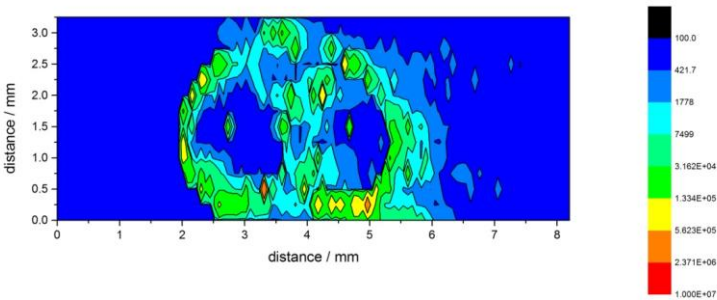
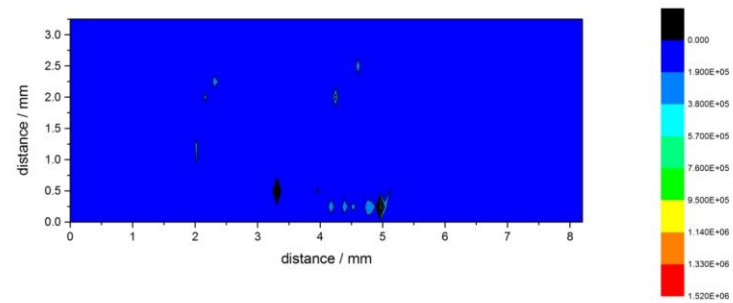


Yorkshire Wheat

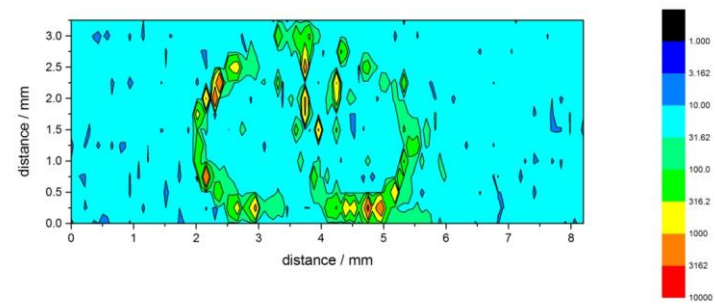
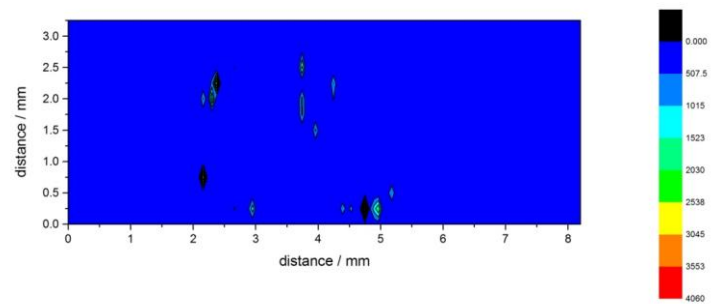
C



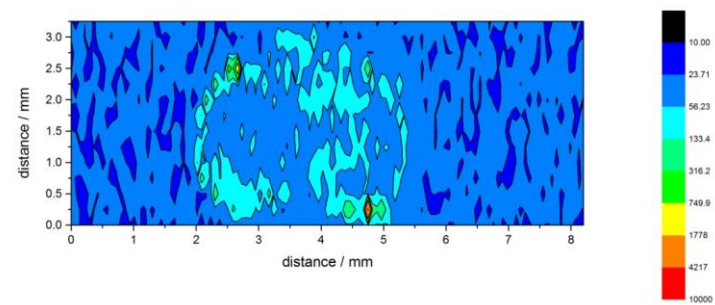
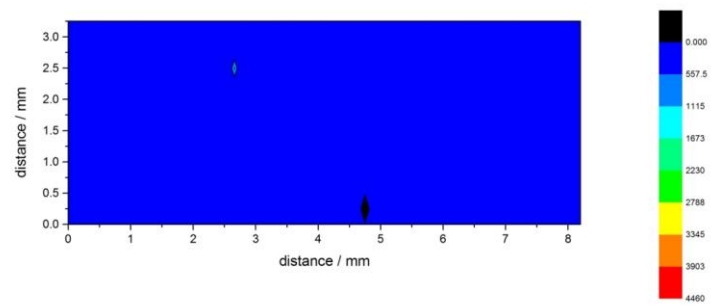
AI



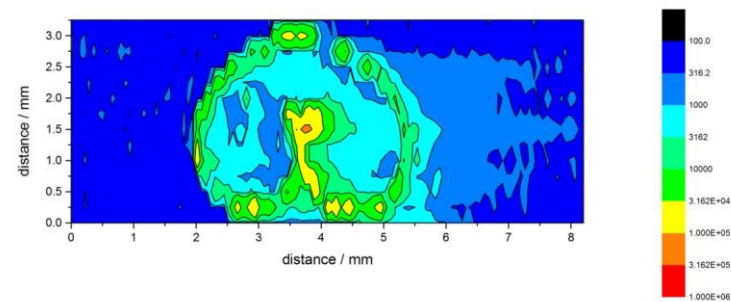
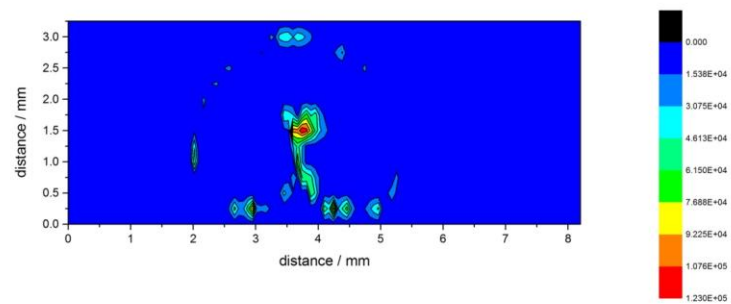
V



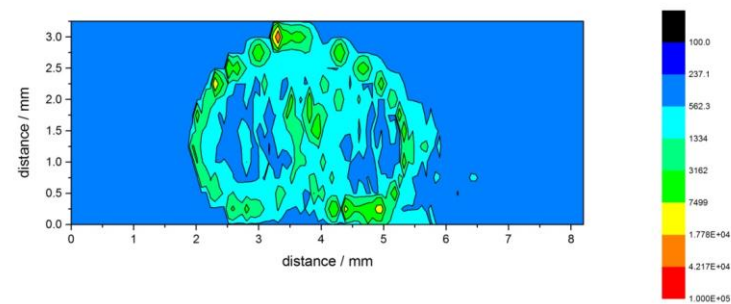
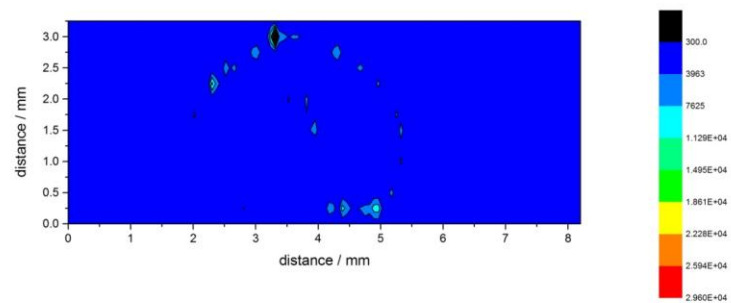
Cr



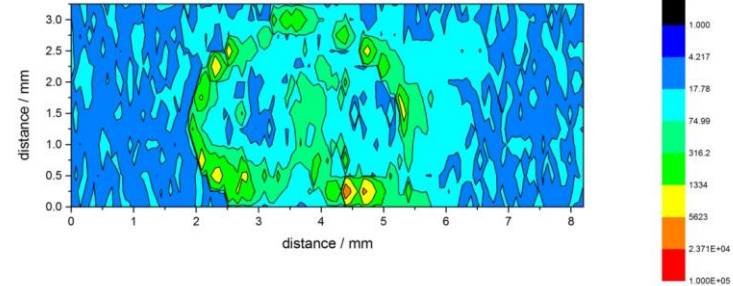
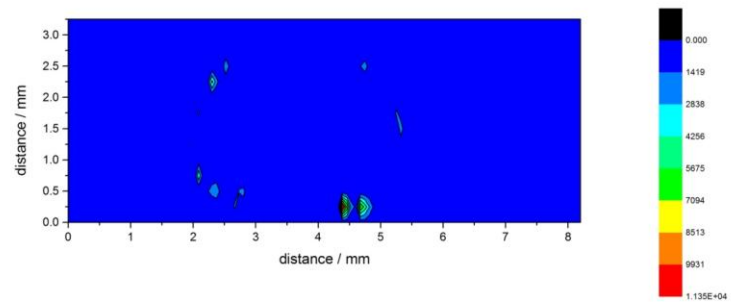
Mn



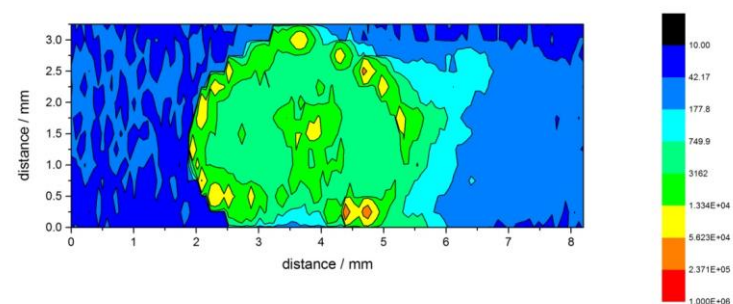
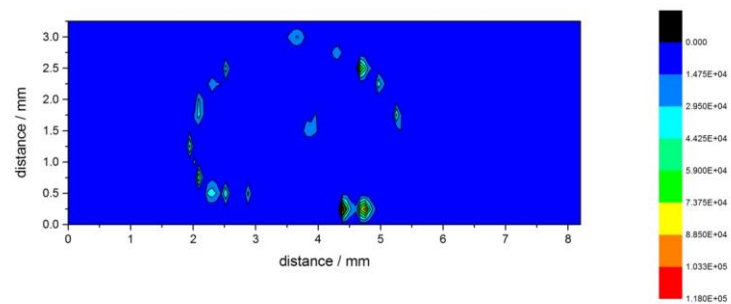
Fe



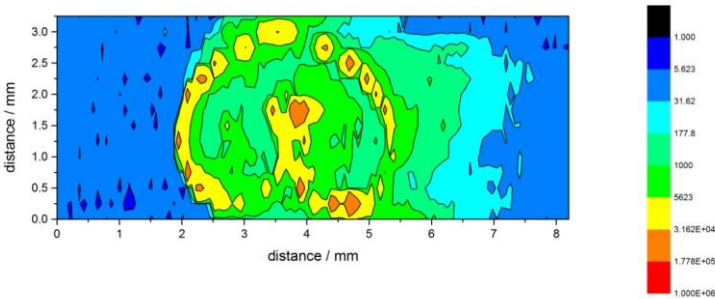
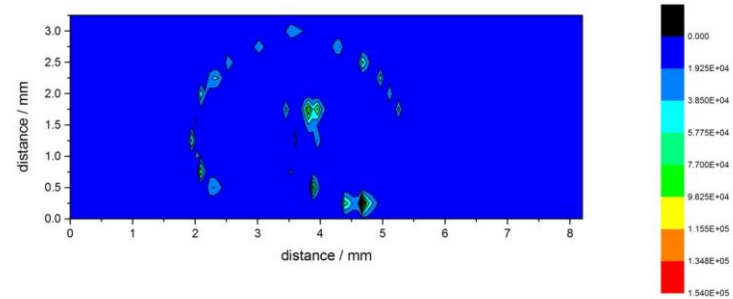
Ni



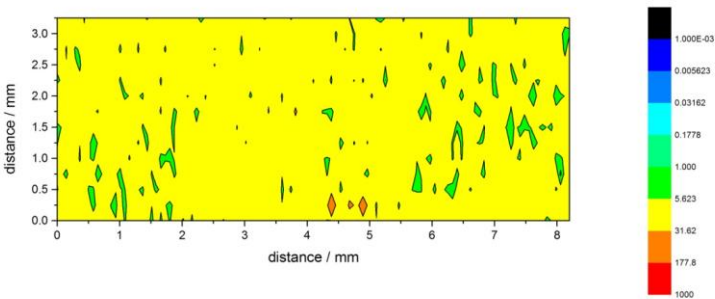
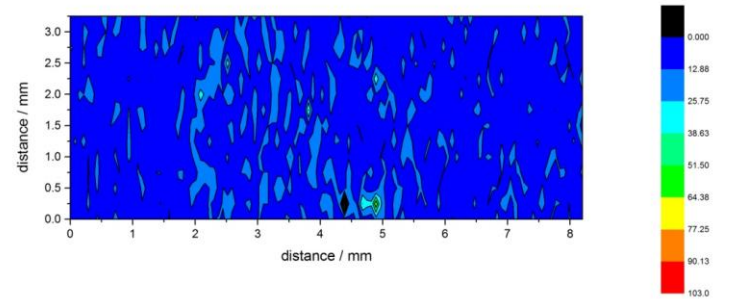
Cu



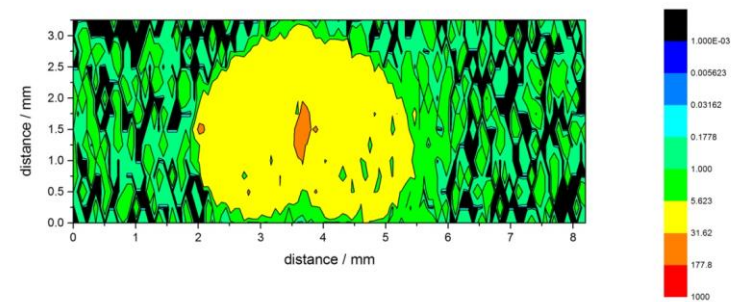
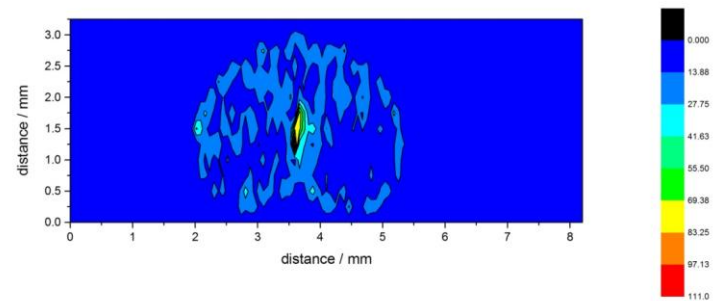
Zn



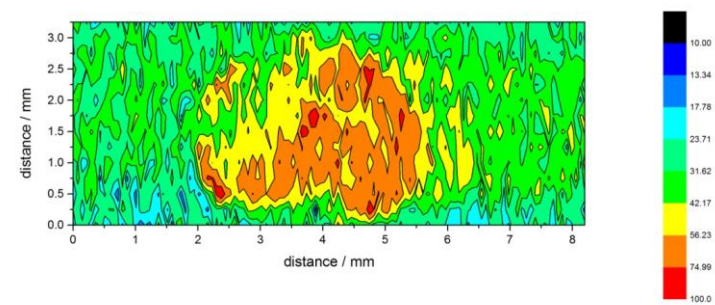
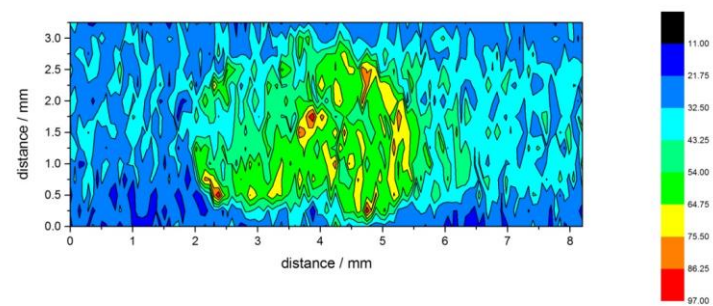
As



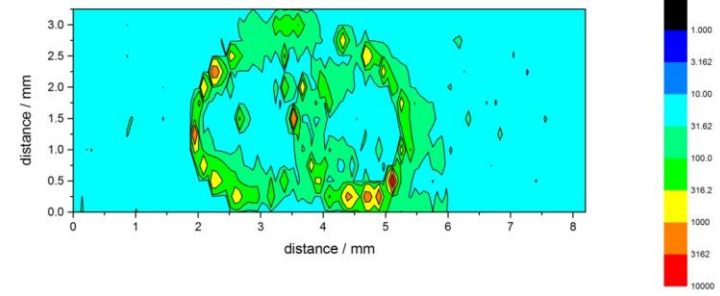
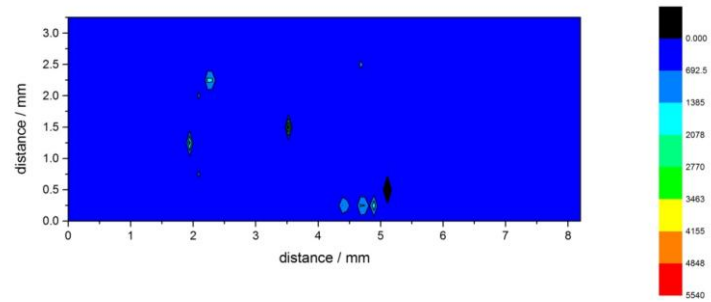
Cd



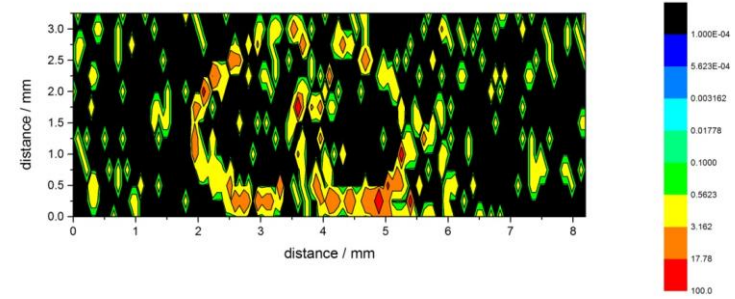
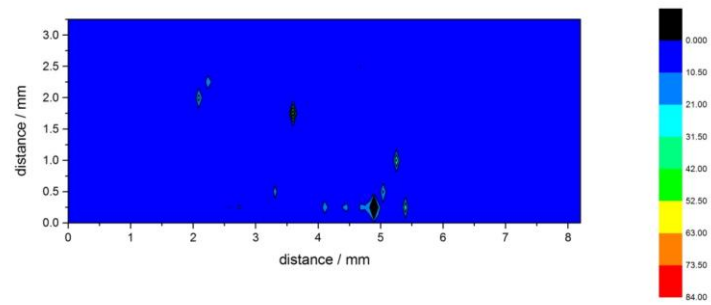
Hg



Pb

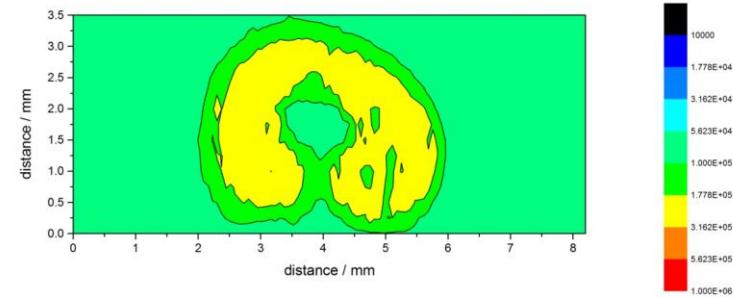
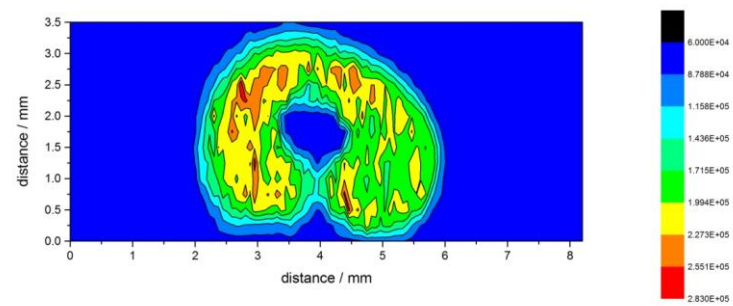


U

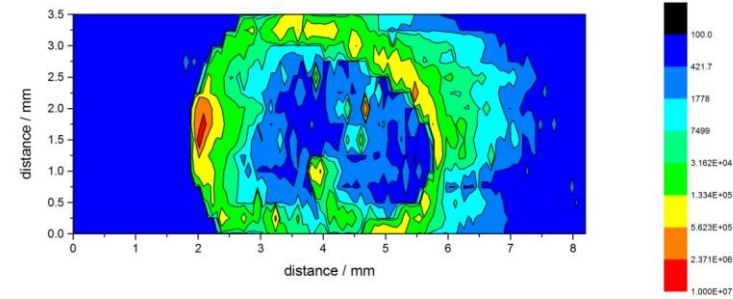
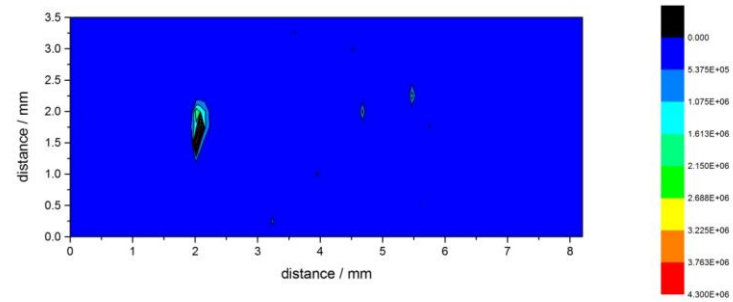


Perth and Kinross Wheat

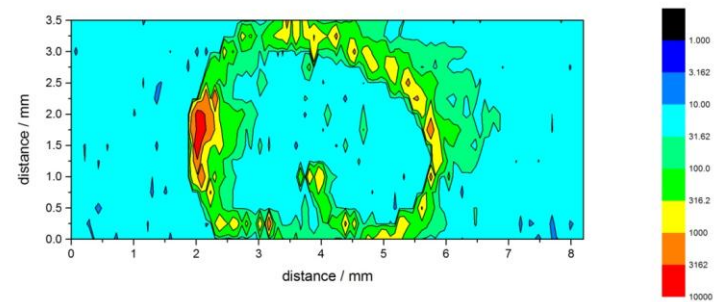
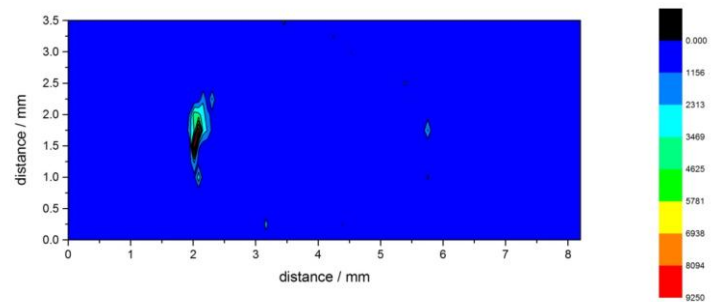
C



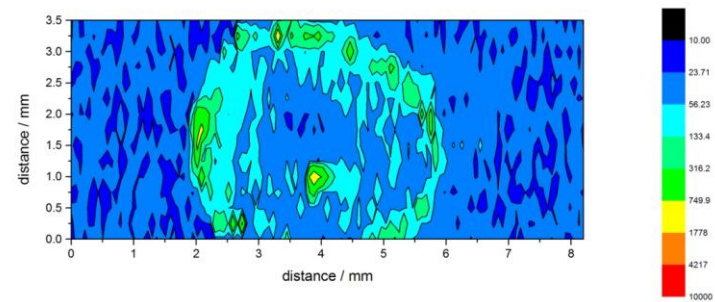
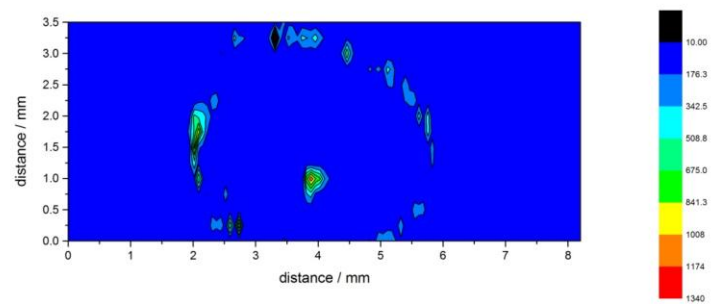
AI



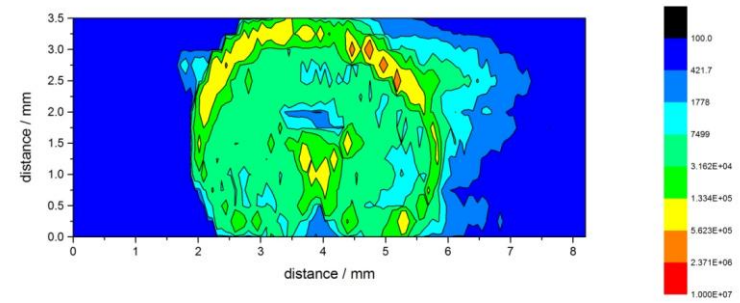
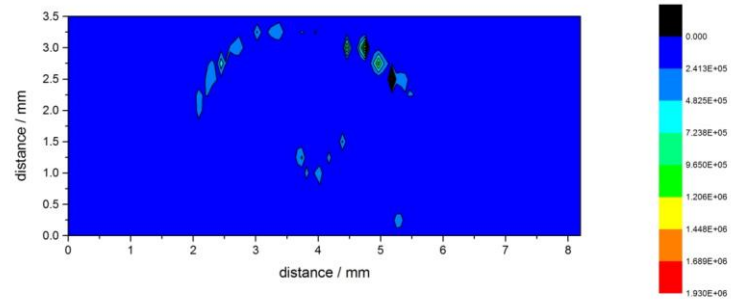
V



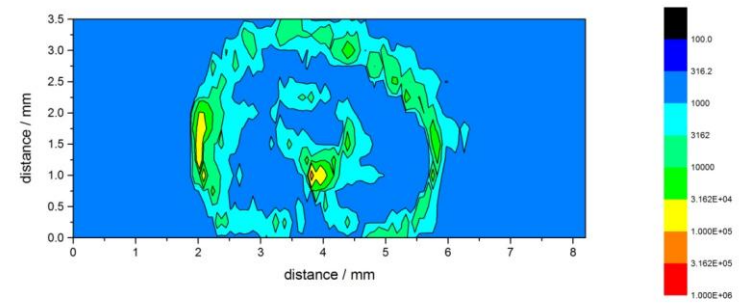
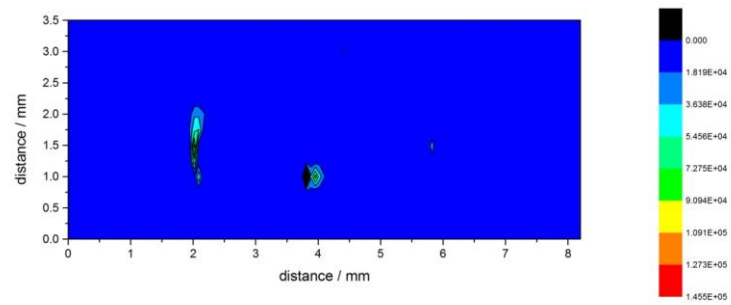
Cr



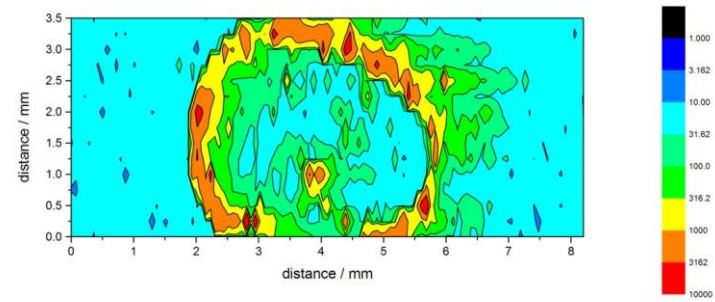
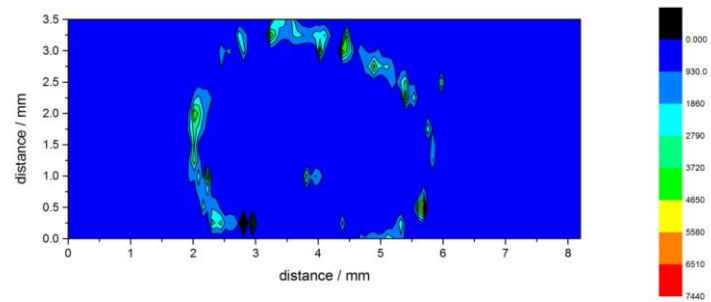
Mn



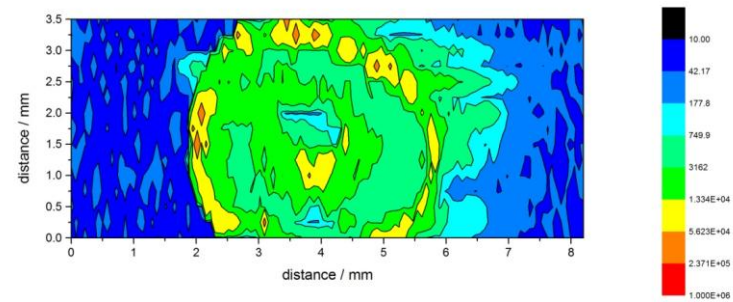
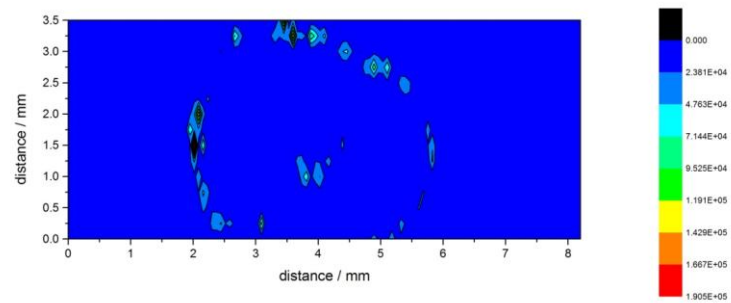
Fe



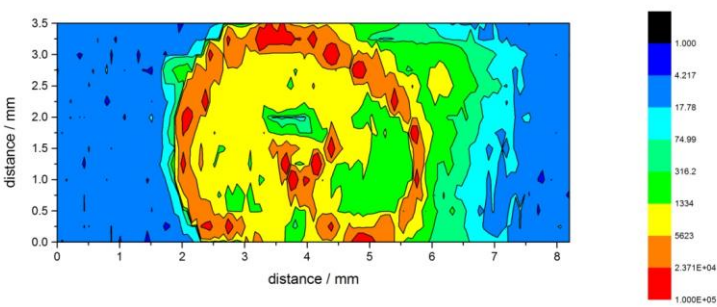
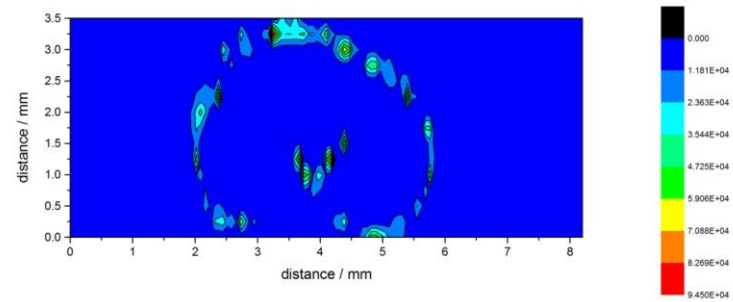
Ni



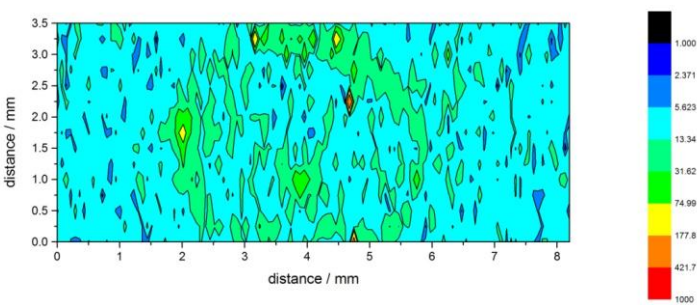
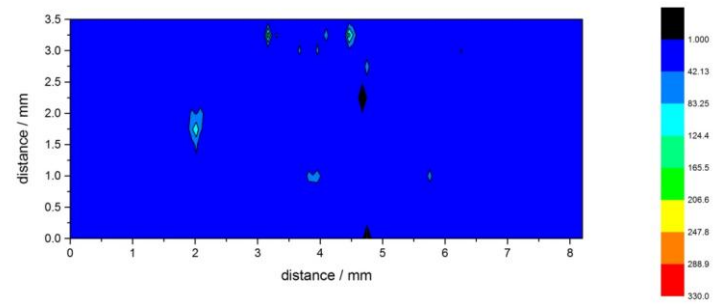
Cu



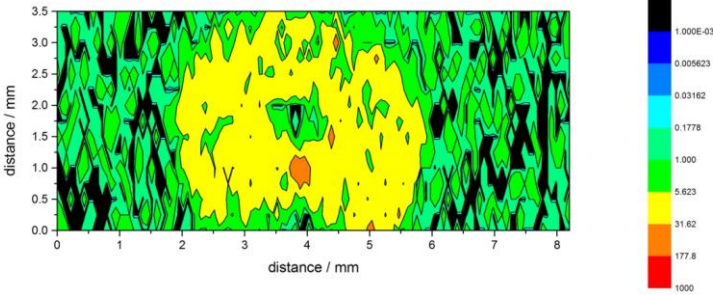
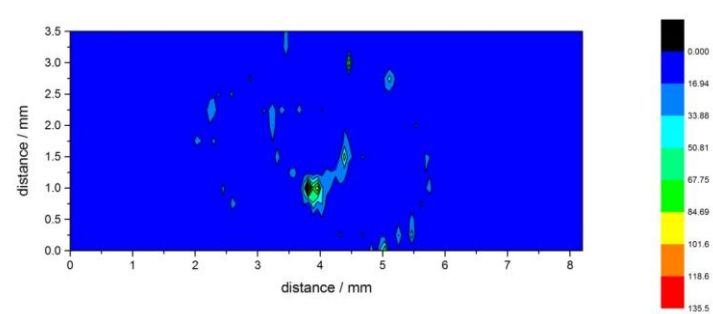
Zn



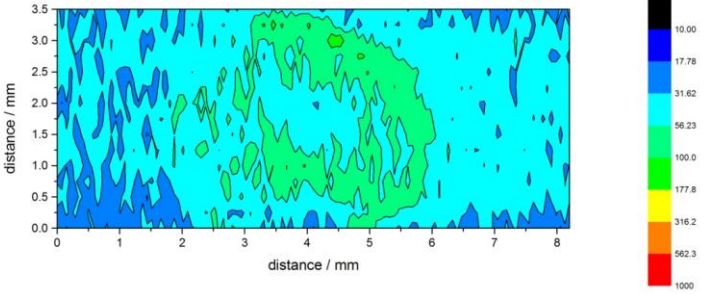
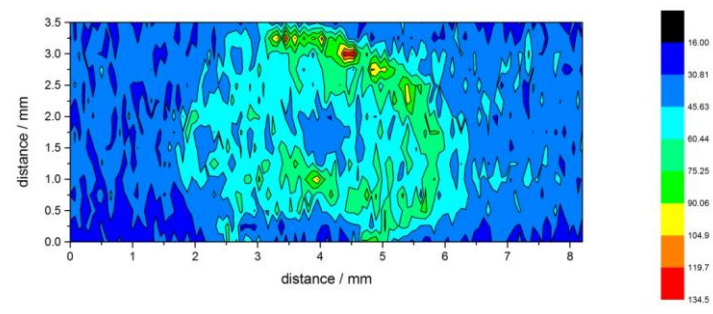
As



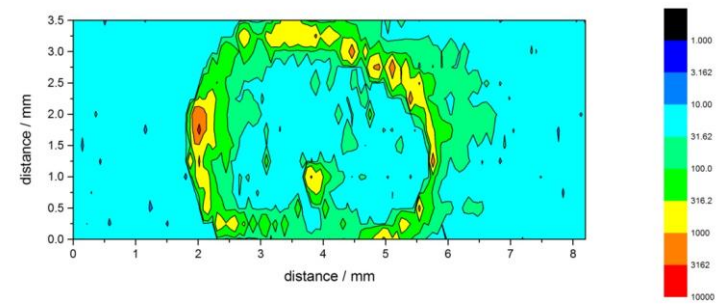
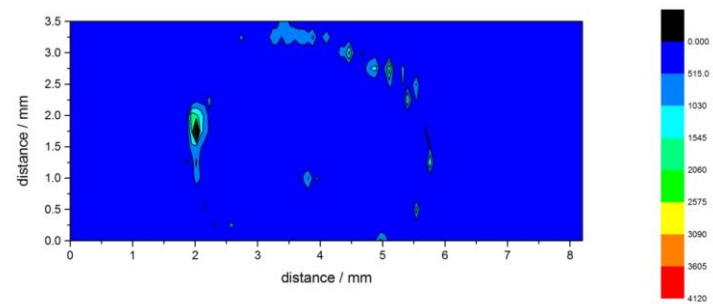
Cd



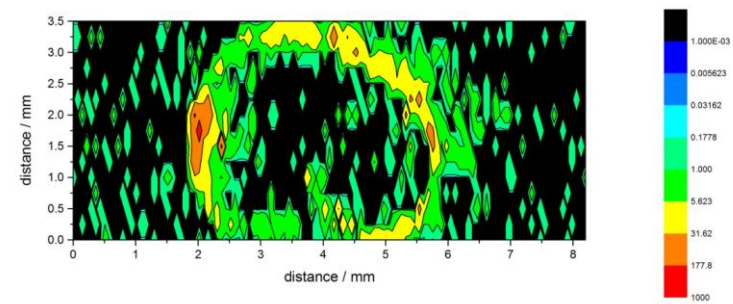
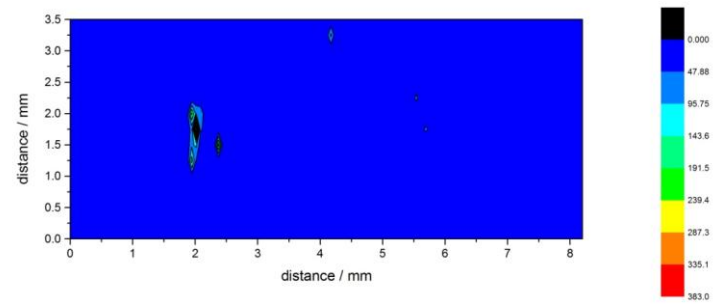
Hg



Pb

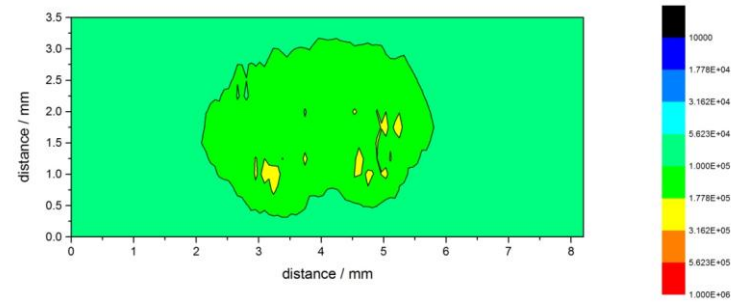
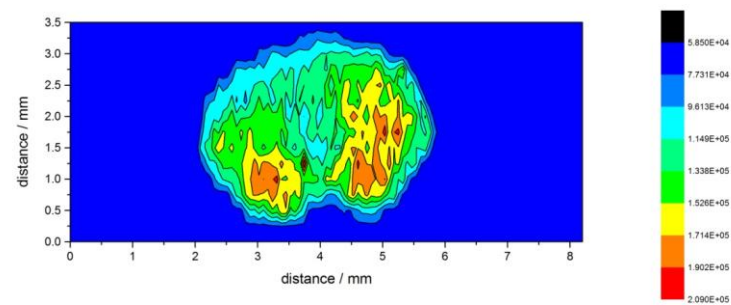


U

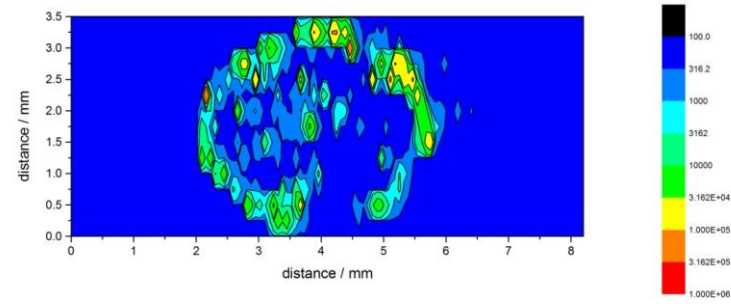
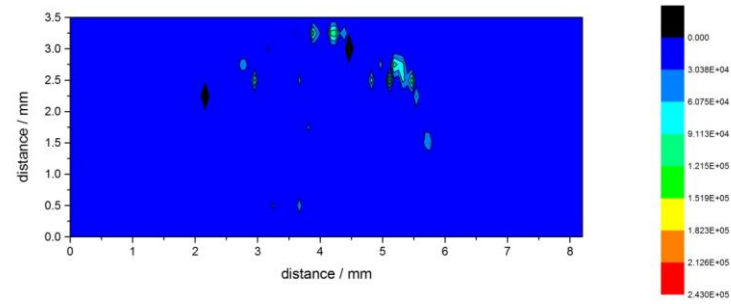


Yorkshire Barley

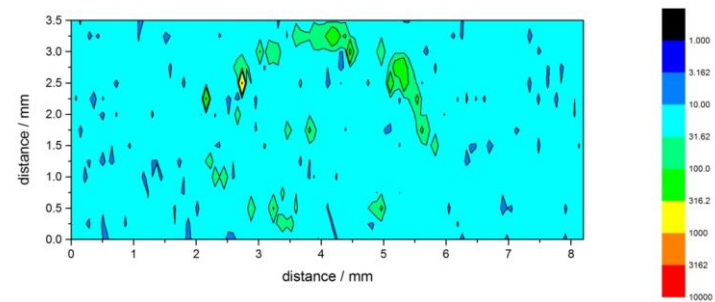
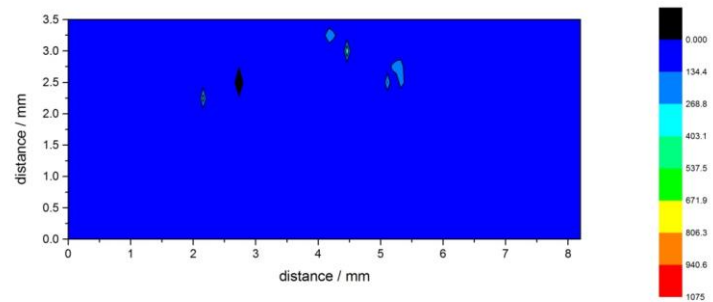
C



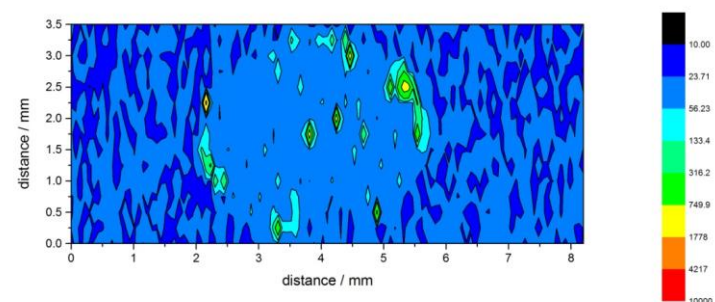
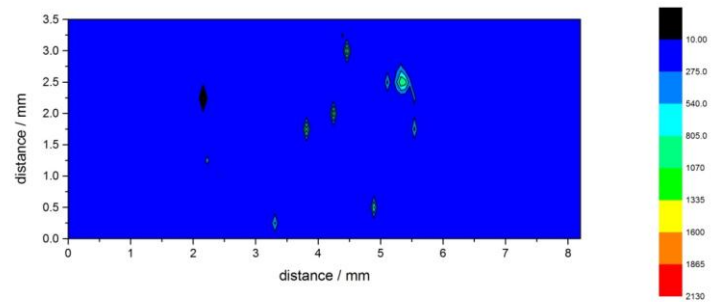
AI



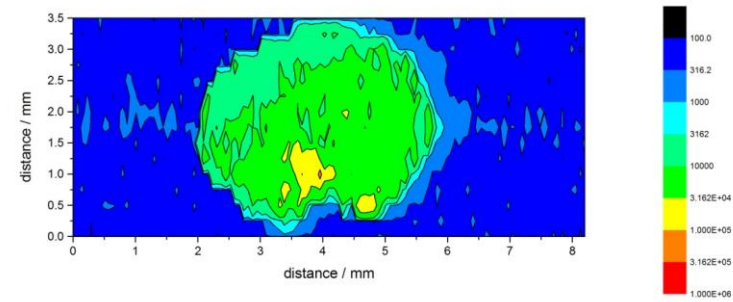
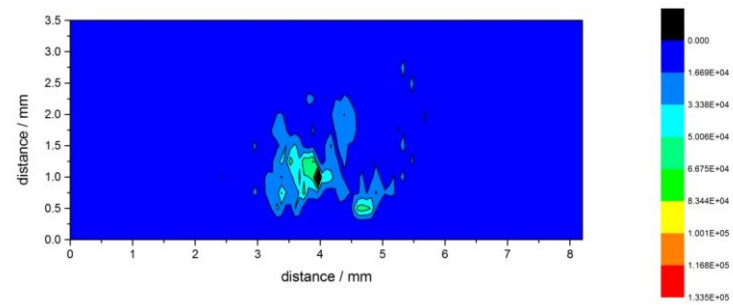
V



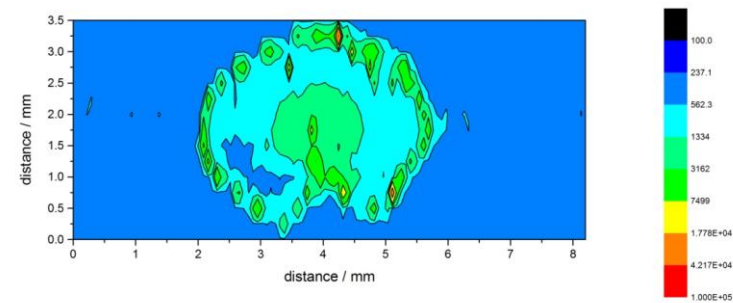
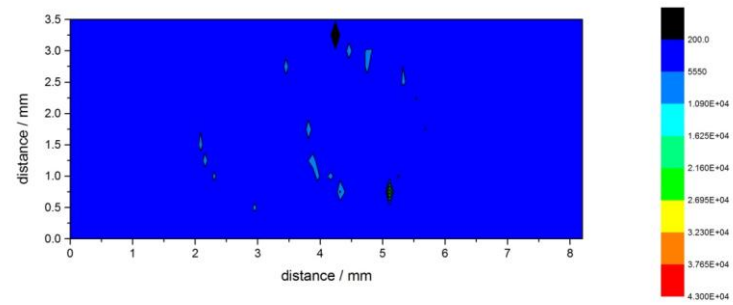
Cr



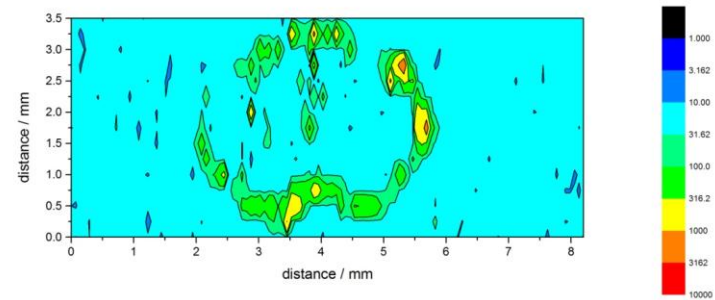
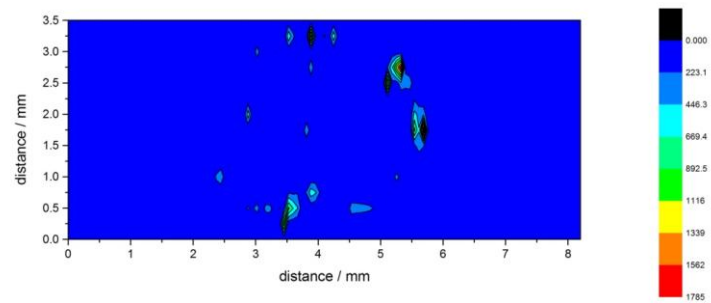
Mn



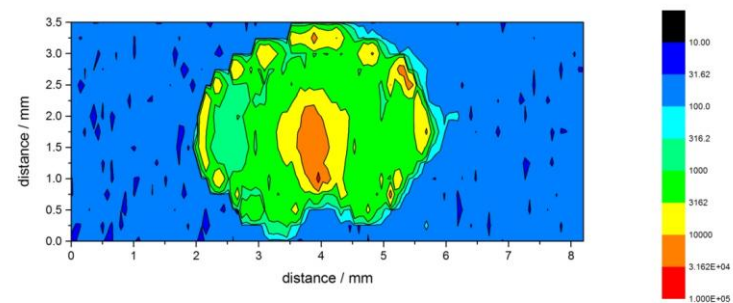
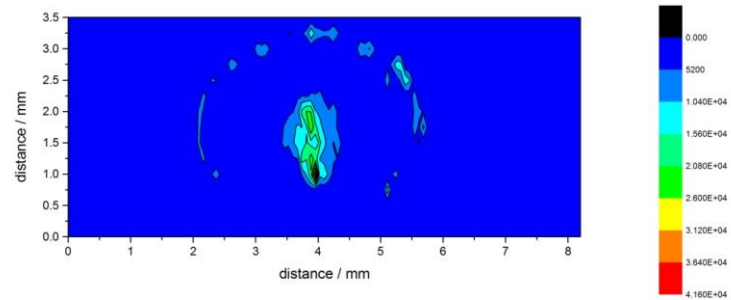
Fe



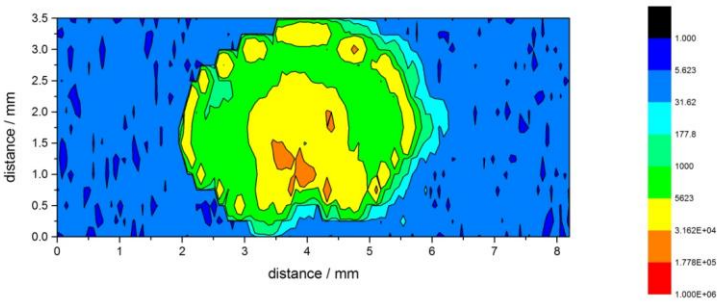
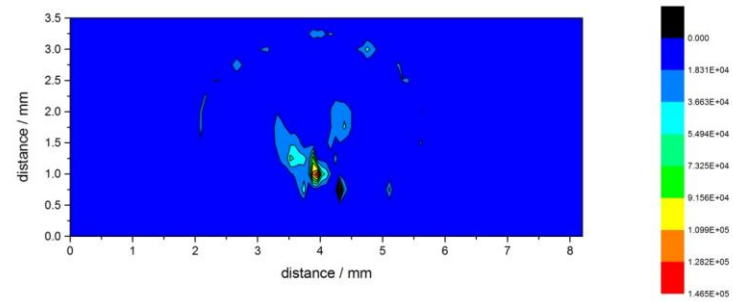
Ni



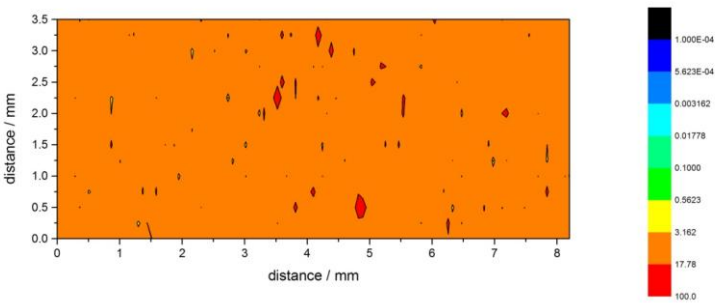
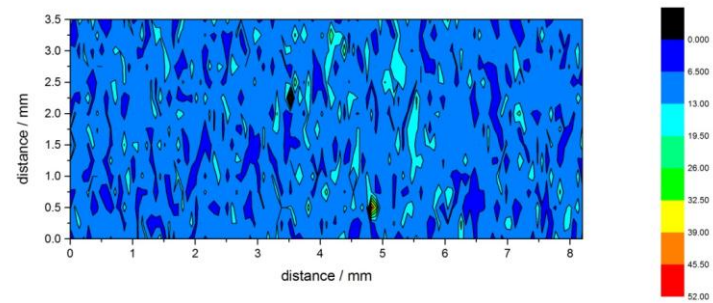
Cu



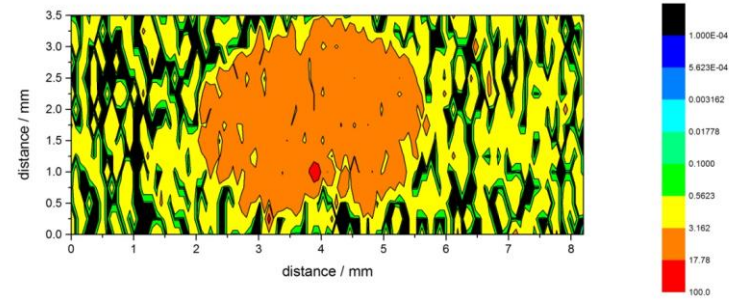
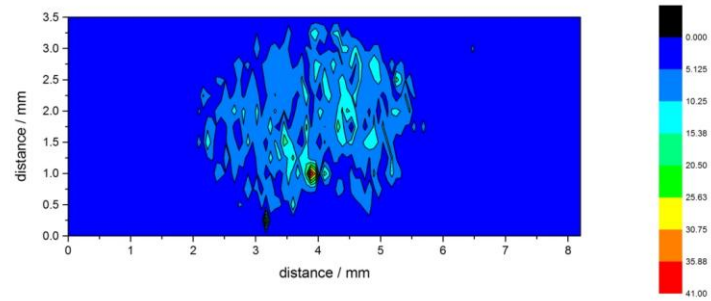
Zn



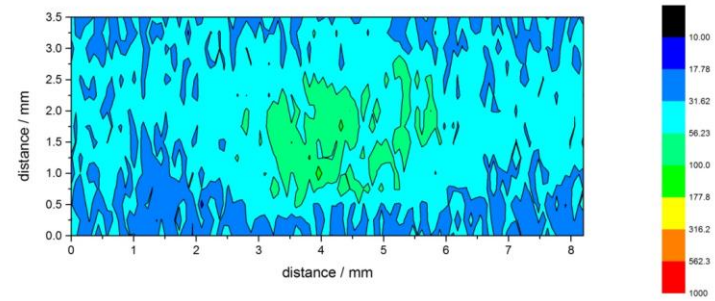
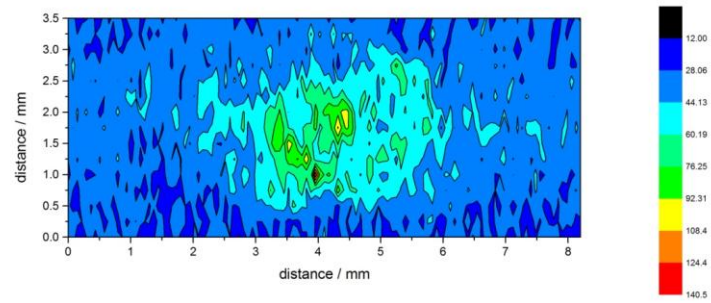
As



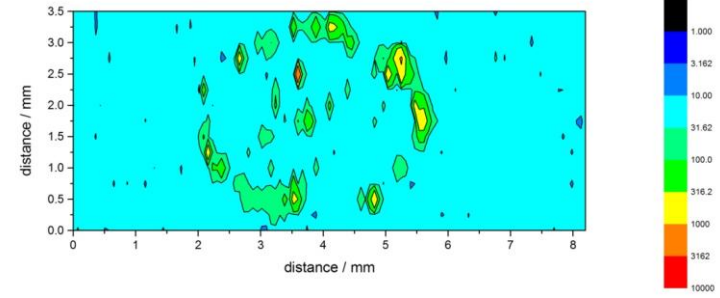
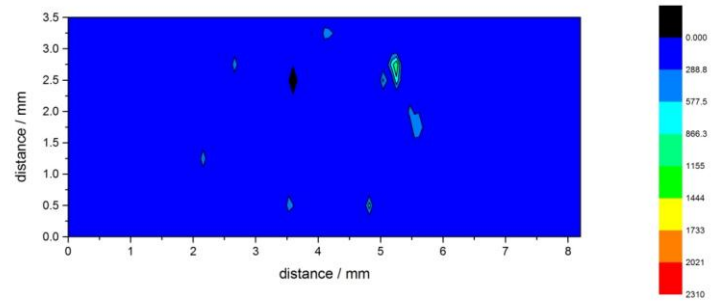
Cd



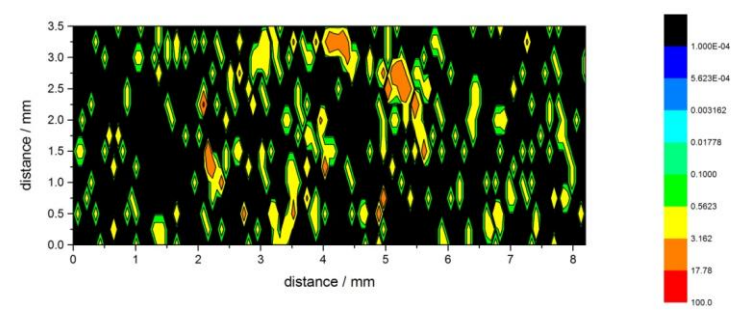
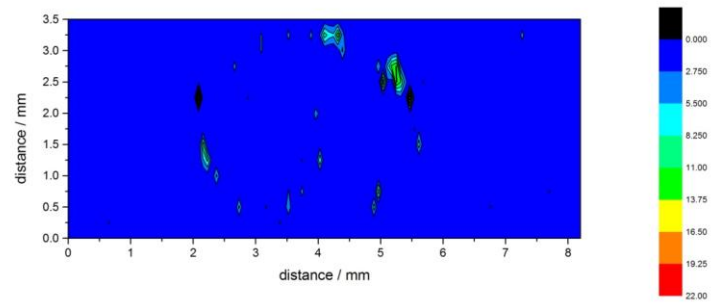
Hg



Pb



U



Northern Ireland Wheat

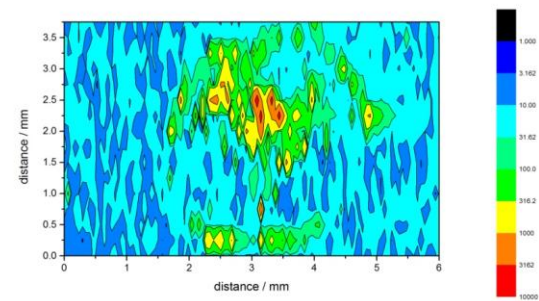
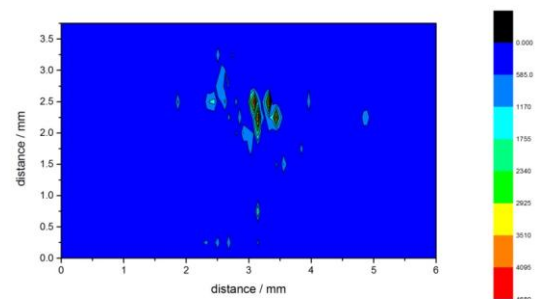
C



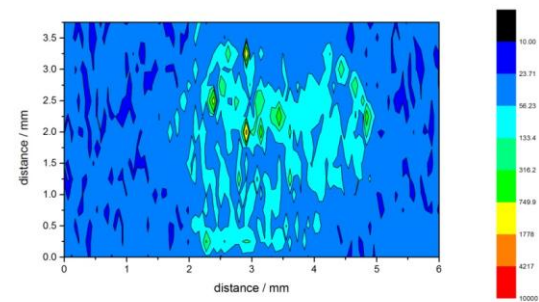
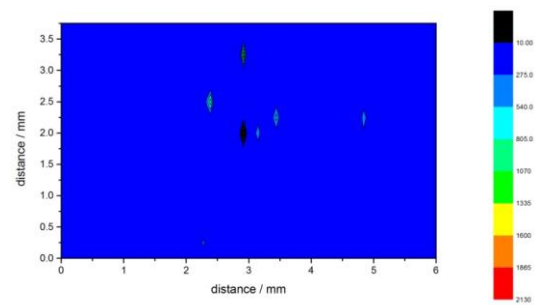
AI



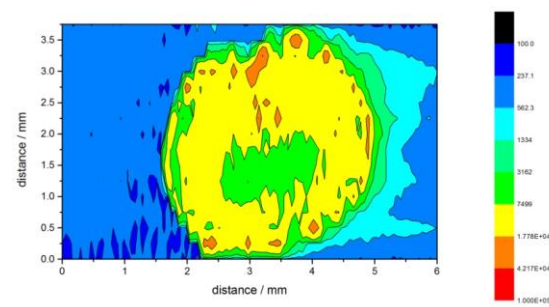
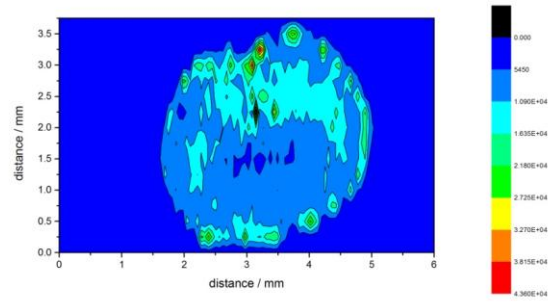
V



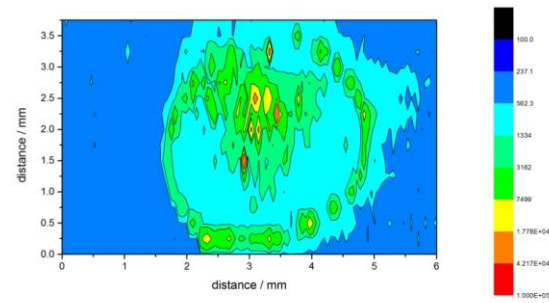
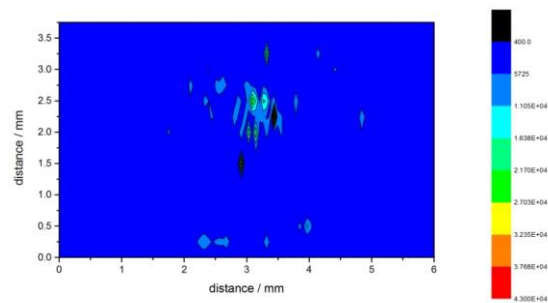
Cr



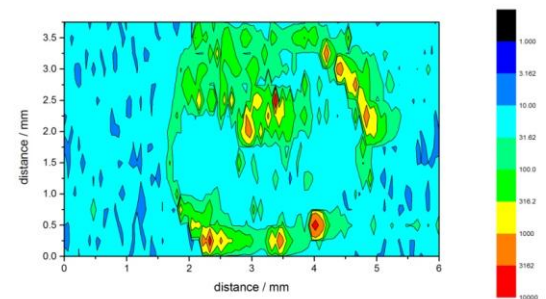
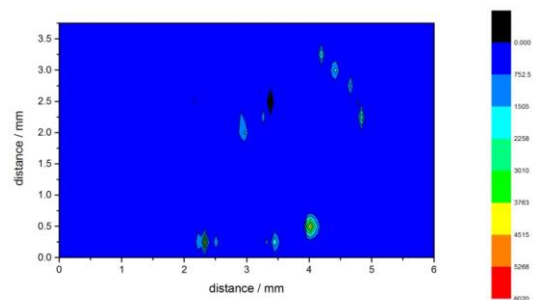
Mn



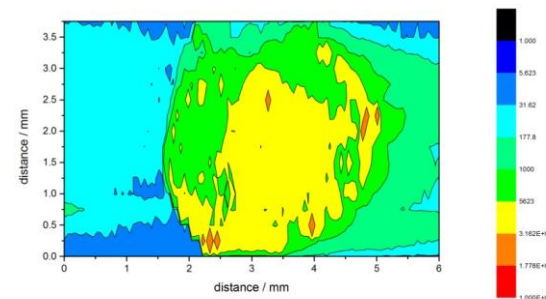
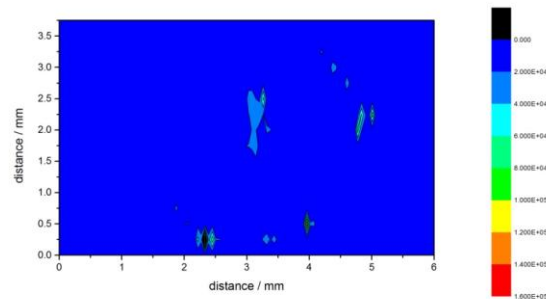
Fe



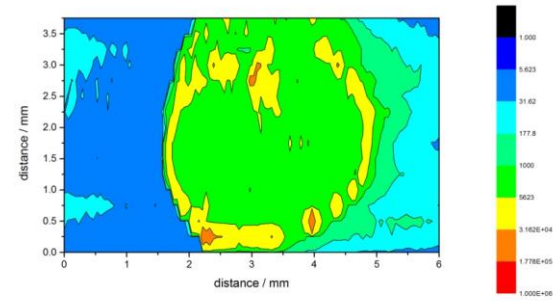
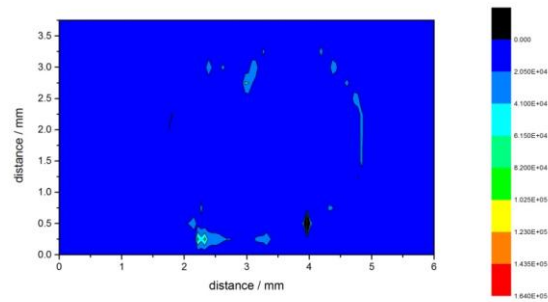
Ni



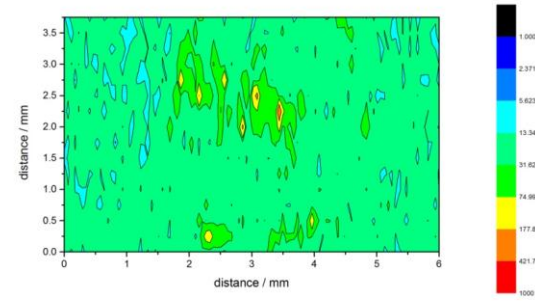
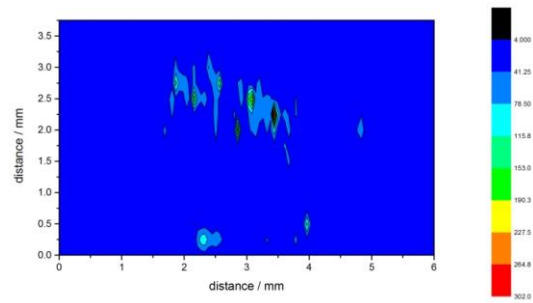
Cu



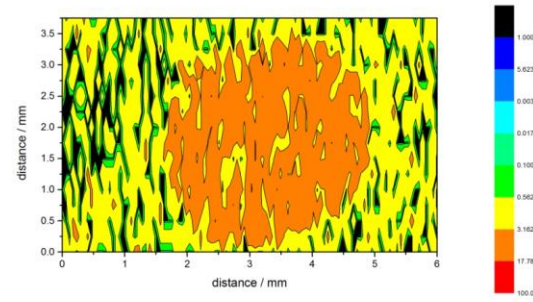
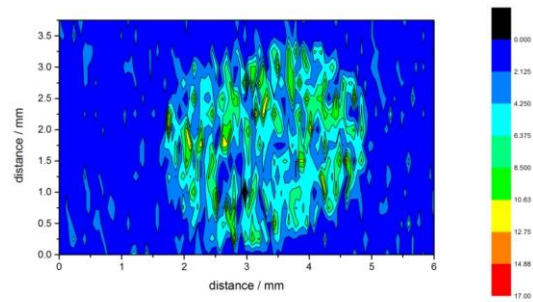
Zn



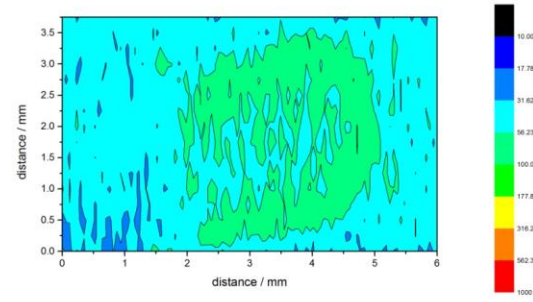
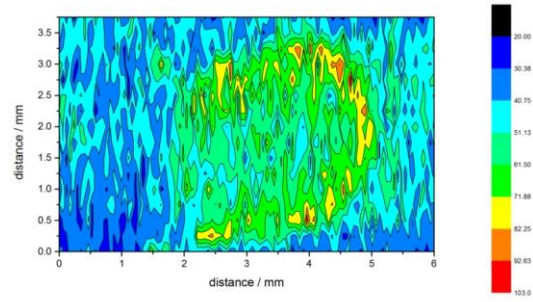
As



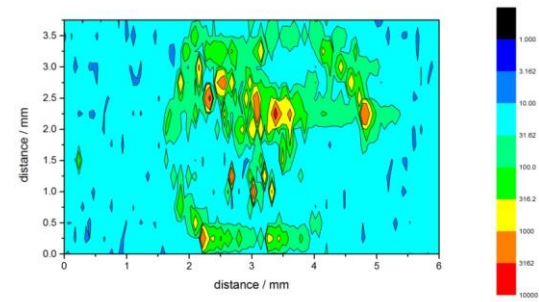
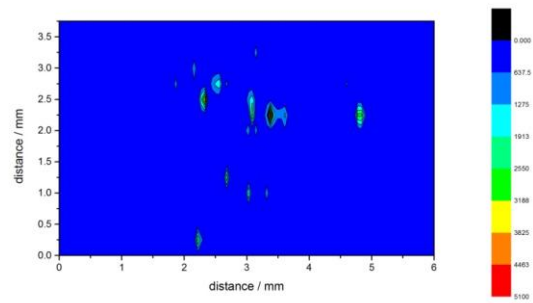
Cd



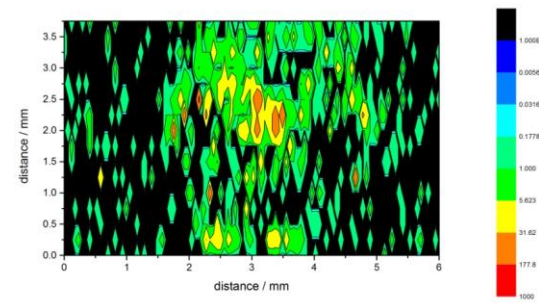
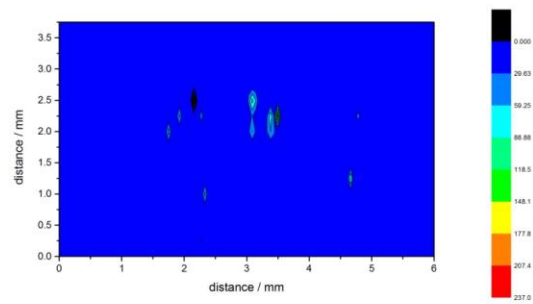
Hg



Pb

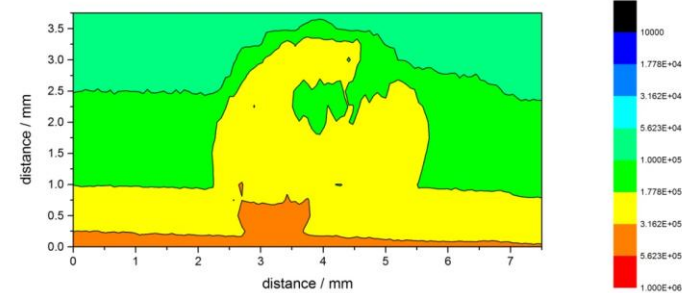
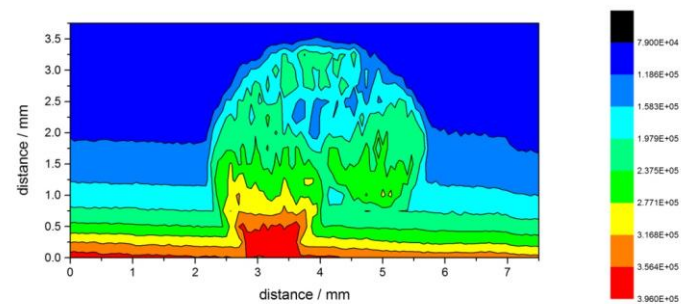


U

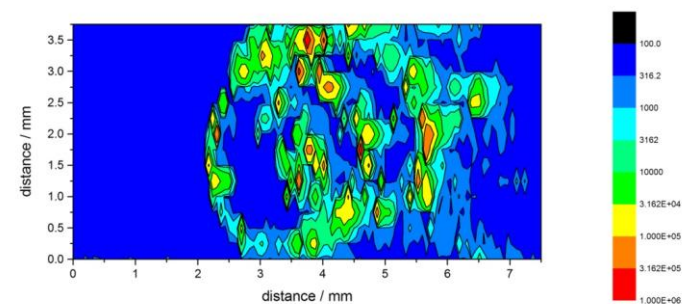
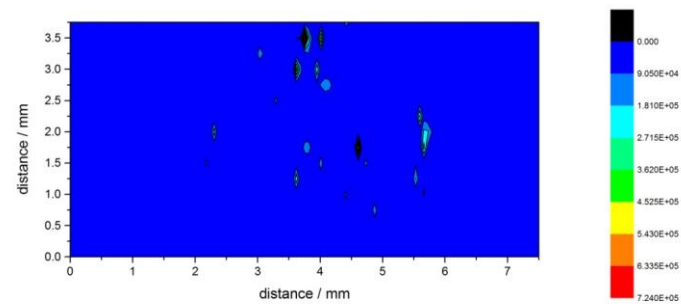


Nottinghamshire Wheat (Tuxford)

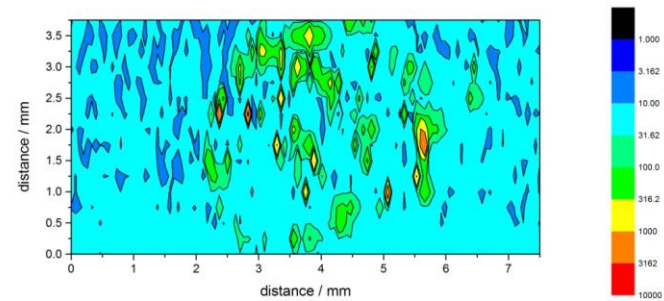
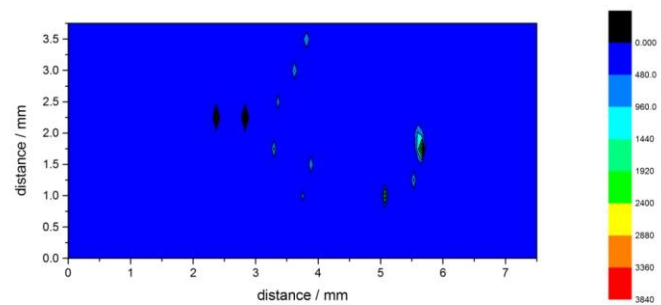
C (*shows declining carbon gas background)



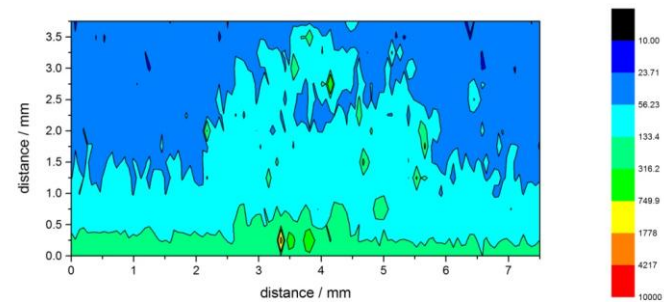
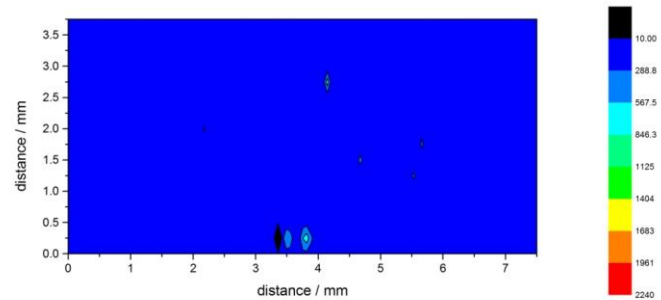
AI



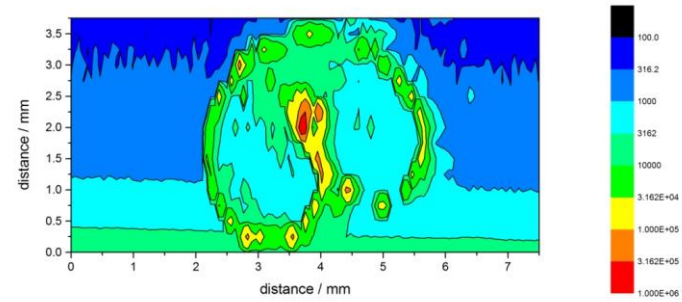
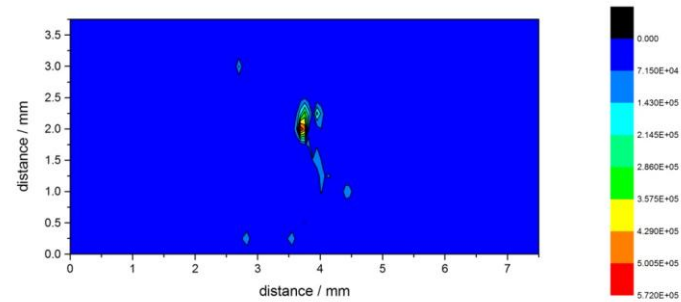
V



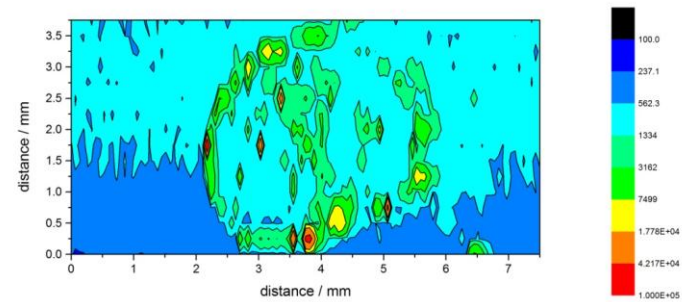
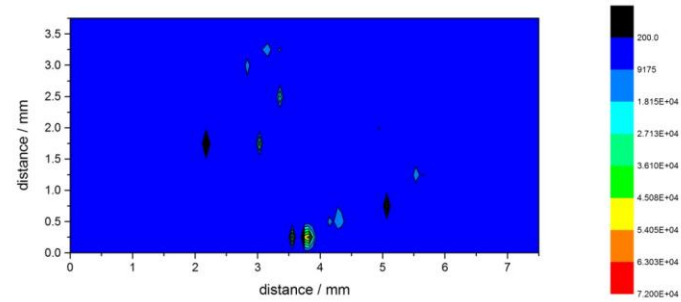
Cr



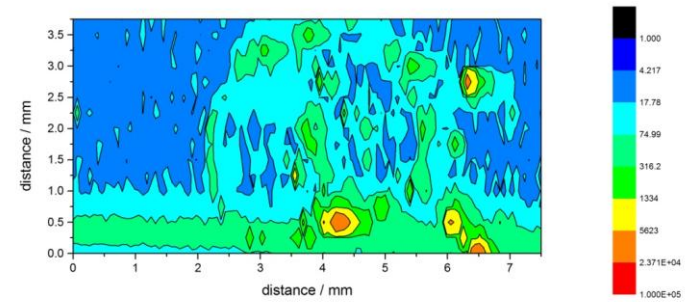
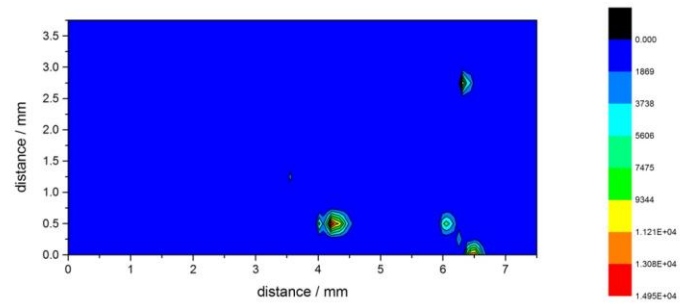
Mn



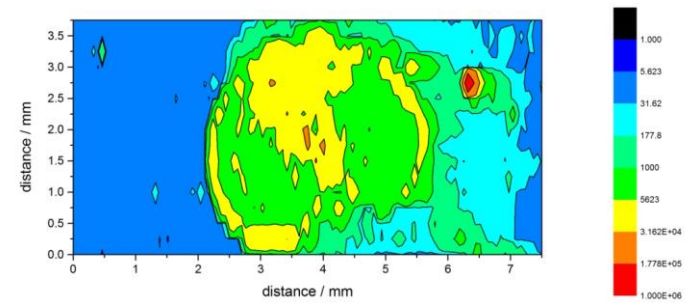
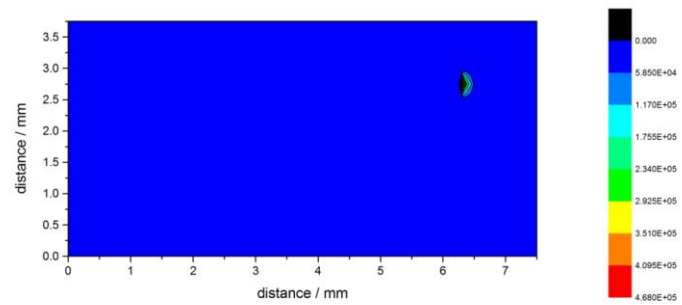
Fe



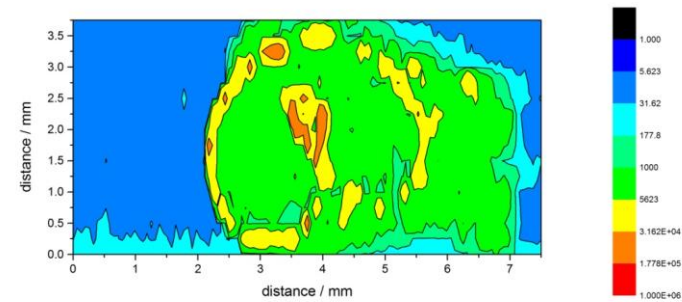
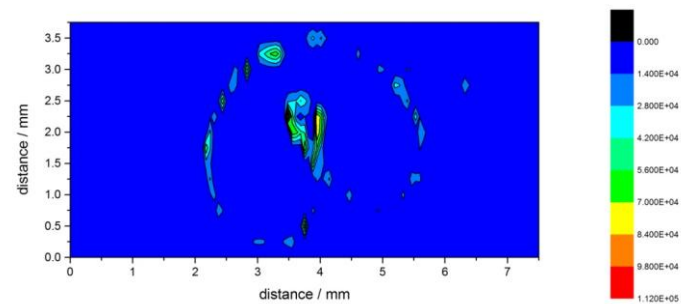
Ni



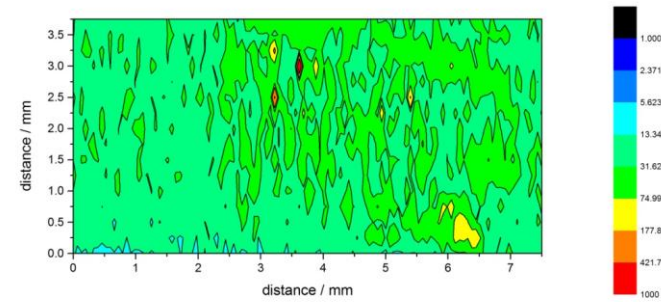
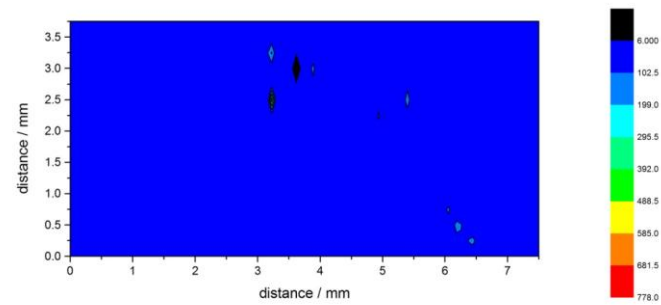
Cu



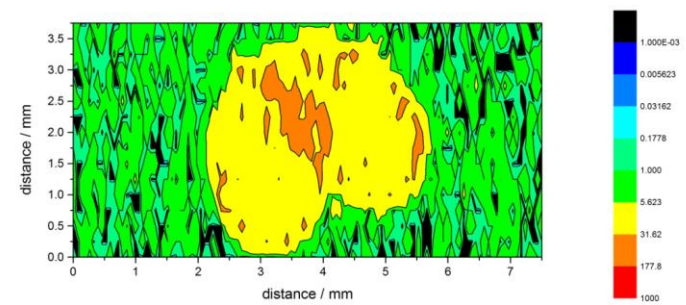
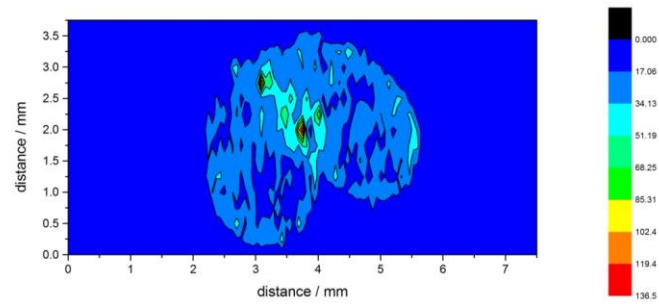
Zn



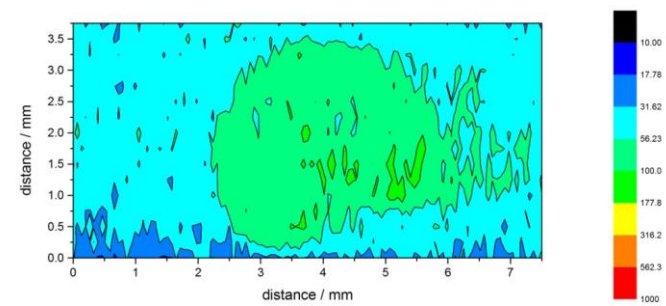
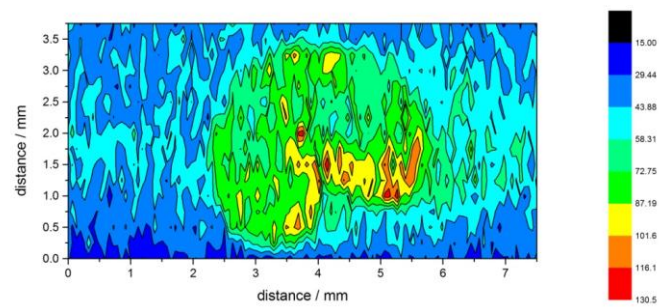
As



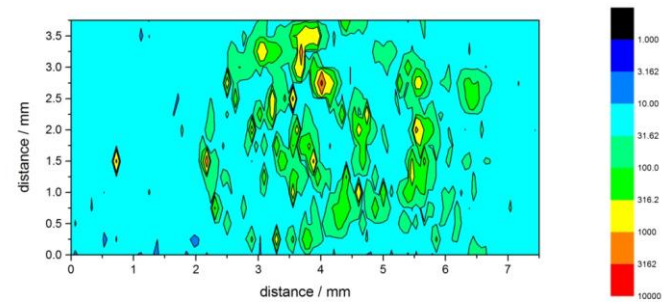
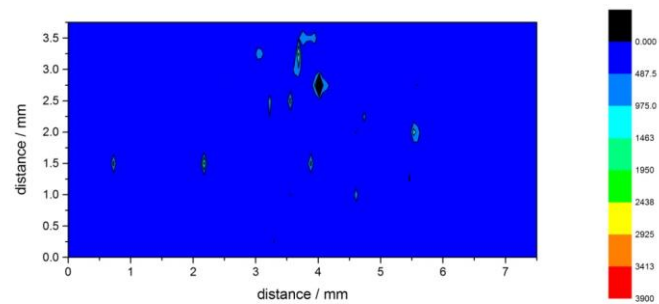
Cd



Hg



Pb



U

